



MAANAADAD

AGOOPICHGEWIN

MANJIGWAA INAADIZIWIN

ANISHINAABEK MIINWAA

WIISAAKODEK BEMAADZIIG

Bgidnigewin awii mzinaakazigaadeg

Gikendmowin maampii wiindmaagewinin adaa gikinoobiigaade, akina gwa maage abangii gweta, miinwaa gwa manjgwa iidik awaazhi gikinoobiiman, giin awii nikaasyin maage awii swe-ookii-in, wenpash gwa.

Gdoo gwejmigoo awii

- aga aangawaamis awii gweknaagwok maanda egikinoobiiman
- dbaajman ezhinakaadeg mzinignan agaa gikinoobiigaadeg, miinwaa agaa zhibiiged; miinwaa
- aga dbaajim maanda mzinigan agaa gikinoobiigaadeg aawan agaa mzinaakzigaadeg maampii Gimaa Gamig Geneda miinwaa gaawii gikinoobiigan gaawii agiijichgaadesno maage gaawii agii baginaziin Gimaa Gamig Geneda

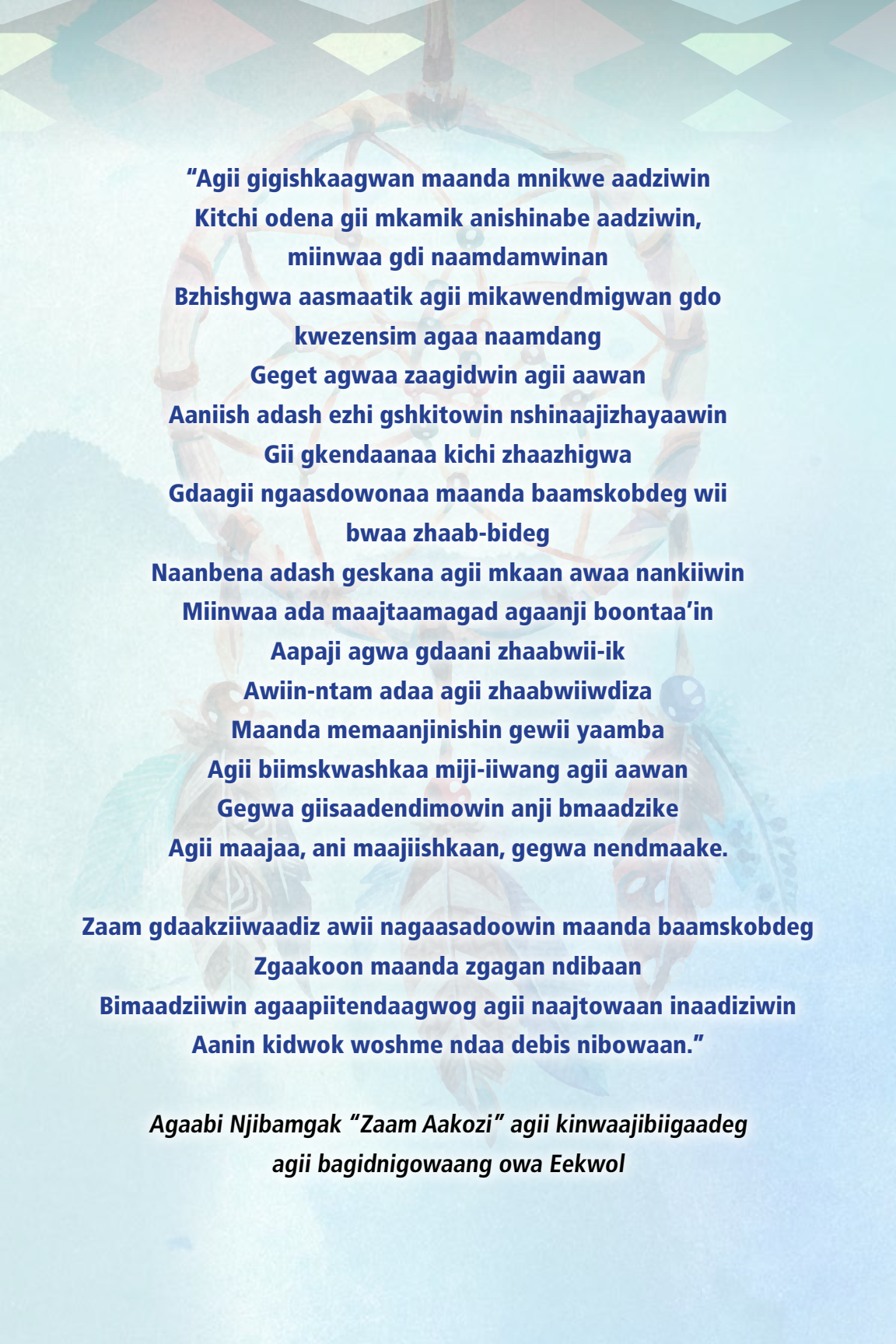
Awii gikinoobiigaadeg miinwaa awii adaawen gaawii bgidnigaadesno, agiishpin goweta bgidniged Dibaaknige Gimaawin Geneda maampii www.justice.gc.ca.

© Ogimaa Kwe maampii Canada, e'naabshkaagjin Naagaanziitang Onaaknigewin miinwaa Gitchi Ogagiidoodmaage Nini 2018.

ISBN: 978-0-660-23905-7

Cat. No.: J2-366/1-2015Roj-PDF

Dibaaknige Geneda nisidiwnan agii naadmaaged National Aboriginal Circle Against Family Violence awii zhichigaadeg maanda mzinigaans.



**"Agi gigishkaagwan maanda mnikwe aadziwin
Kitchi odena gii mkamik anishinabe aadziwin,
miinwaa gdi naamdamwinan
Bzhishgwa aasmaatik agii mikawendmigwan gdo
kwezensim agaa naamdang
Geget agwaa zaagidwin agii aawan
Aaniish adash ezhi gshkitowin nshinaajizhayaawin
Gii gkendaanaa kichi zhaazhigwa
Gdaagii ngaasdowonaa maanda baamskobdeg wii
bwaa zhaab-bideg
Naanbena adash geskana agii mkaan awaa nankiiwin
Miinwaa ada maajtaamagad agaanji boontaa'in
Aapaji agwa gdaani zhaabwii-ik
Awiin-ntam adaa agii zhaabwiiwdiza
Maanda memaanjinishin gewii yaamba
Agi biimskwashkaa miji-iiwang agii aawan
Gegwa giisaadendimowin anji bmaadzike
Agi maajaa, ani maajiishkaan, gegwa nendmaake.**

**Zaam gdaakziiwaadiz awii nagaasadoowin maanda baamskobdeg
Zgaakoon maanda zgagan ndibaan
Bimaadziwin agaapiitendaagwog agii naajtowaan inaadziwin
Aanin kidwok woshme ndaa debis nibowaan."**

***Agaabi Njibamgak "Zaam Aakozi" agii kinwaajibiigaadeg
agii bagidnigowaang owa Eekwol***

DGOSJIGNAN

Maanda mzinigaans iyaawaang.....	1
Inoodewiziwin mjizhiwebziiwin adaa ngaasjigaade.....	2
Agiishpin niizaanendaagwok	4
Anishinaabek miinwaa Wiisaakodek bemaadzijig maampii Geneda	5
Wegnesh maanda agoopjichgewin?.....	6
Owi “Biimskoobdeg agoopjichgewin”	11
Aaniish ezhiwebziwaad gdabinoojii-ig?	13
Aaniish maanda enji zhiwebzii-aan?	15
Jichaagowin kinoomaagewinan	19
Woshme ana nishin bwaa maajaa-aan maage animaajaa-aan?.....	22
Aaniish agiishpin bwaa maajaa-aan?	23
Aaniish agiishpin animaajaa-aan?	24
Niizaanendaagwok age zhichge-aan	25
Wegnesh age gwejmag awii naadmowid?	27
Aaniish age zhiwebak agiishpin gnoogwaa dakoonweninwok?	29
Aaniish age zhiwebak agiishpin dakoonawaad ninda mejidoodmanjin?	31
Aaniish age zhiwebziwaad gdabinoojiinmag agiishpin animaajaa-aan?	33
Aaniish age zhidebnaamaa aakwa-odewin miinwaa mshkowendimowin awii?.....	34
Akidwinan enkaazan maampii mzinigaansin.....	37

MAANDA MZINIGAANS IYAAWAANG

Maanda mzinigaans agii azibiigaade e-wiisgendmajig Anishinaabek miinwaa Wiisaakodek aga nakweshkmajig mjizhiwebzii-win bmaadziwaad. Aaniwi agwa, kina gwa ewiisgendan, maage ewiisgendmichged—kwe maage nini, gechi piitzit maage eshkniigid, Anishinaabe maage Wiisaakode maage gaawi—agiikmigaazwok awii gwedwewaad awii naadmowindwaa.

Maanda kidyaan Anishinaabek miinwaa Wiisaakodek zhinda mzinigaansin, kina agwa Anishinaabe bemaadziig dagwenjgaazwok, abe'kaanag wiigwo mzinigan maandaa dbaajmowinin atemgad gwanda Eshkiimewik awaa gindmowaad.

Agindan maanda mzinigaans agiishpin:

- mjizhiwebziiwin maage agoopjichgewin temgak endaa-in—wiijigaabwitaadiwin, maage gdo inoodewiziwin;
- ndo wendman ganaadowiziwin, mnanendmowin endaa-in awii msendman giin miinwaa gdabinoojiinmag; maage
- gdo magoshkaadendam makwenmad gdinwendaagaan maage gwaya endnakiid odenaang enkwehkmowaad mjizhiwebziiwin maage goopjichgewin endaa-aad.

Maanda mzinigaans aga naadmaagwan nsastaman:

- ezhi bmibdeg agoopjichgewin miinwaa inoodewiziwin mjizhiwebziiwin; miinwaa
- mjizhiwebziiwin miinwaa agoopjichgewin gaawii dibendaagsino Anishinaabek miinwaa Wiisaakodek inaadiziwin.

Agiiishpin agwayaa gakenmad waasgendan, gdaa wiindmowaa gaawii njike iyaasiwok ... gdaa waabmdowaa maanda mzinigaans ngwaji enji waankii-endagwog.

Gaawii ndikdasiimi—Maanda gkenjgewin maampii mzinigaansin gaawii aawizino onashowewin wiindmaagewin. Awii debnaman onashowewin wiindmaagewin gego ezhiwebak, aabdek gwa gdaa gnoonaa ogiigdamaagenini.



INOODEWIZIWIN MJIZHIWEBZIIWIN ADAA NGAASJIGAADE

Makwendan maanda:

- gagwedwe-in awii naadmaagowin gaawii aawzino niinamizawin—awenaamjigaadeg awii bnaajitoon baabiimskobdeg mjizhiwebziiwin miinwaa agoopjichgewin waabmdowemgad mshkowiziiawin.
- gdo-jikewendam, gdo agadendam maage gzegis awii dbaadaman ezhiwebzii'in kina aawinon ezhiwebag agii agoopjichgewin.
- bemaadzijig gwa gdaa wiindmaagwok gegoo jiiwbwaa kidyin awii mkwenmadwaa gdinoodewiziwinag, maage kina gwa inoodewiziwinag daa-aa-naa-aa agoopjichgewin. Ganimaa gwa adaa kidwok akiin gwa gdindwin mjizhiwebziiwin agaa nweshkman. Gaawii maanda debwemgasno!

Awii ngaasjigaadeg agoopjichgewin ada zhiwebad gwaa bezhig azhi dgokii-in. Niibna gwa bemadzijig agii makaanaa-aa waazhi maajtaawaad awii maaji mna-maadziwaad awii mna-nednmowaad, miinwaa binojiinig awii mna-nendmowaad.

Maanda mzinigaans aawan genji maajtaamba. Ada nkwetaanan aanin gegwedwewin, miinwaa gdaa gindaan Anishinaabek miinwaa Wiisaakodek kwewok miinwaa ninwok agaa kiidwaad agaa nkwehkmajig mjizhiwebziiwin miinwaa agaa zhichgewaad niigaan awii zhaa-aad awii mina bimaadziwaad. Ado dbaajmowinwaan gnimaa gdaa naadmaagwan awii makamaan awaa zhaa-in.





Gaawii gdo njikewizisii!

Awiisgendmang gaawii aawizino kichi nenjigewin!

Bkaam agwa gbimaadziwin adaa zhinaagwad!

AGIISHPIN NIIZANENDAAGWOK

- Dowaabmdan giin miinwa gdabinoojimag awii waankiwaad—amii ntam nendwendaagwok!
- Gnoosh Dkonweninwok, maage gwejim gwaya ependmandwod awii giigdaad.
- Bmabtoon gwijkiwen endaad, dkonweninii gamgong, mina-yaawin gamgong, nkweskaadwii gamgong maage name gamgong, agiishpin gshkitowin.
- Aayaazhikwen, noondaagzin, zaagjibowen, wiigidaamigan aji waabmig maage aji noondaag, miinwaa awii gnoonaawaad dkonweninooon.



ANISHINAABEK MIINWAA WIISAAKODEK BEMAADZIIG MAAMPII GENEDA

“...debwe—endan maage gwa gaawin giinwi gdaawmi niigaan waani zhiwebag gdaa boontaa adash nendman gbimaadziwin gimoodziimgag...”

Reproduced with the permission of Christie Lee Charles, aka Miss Christie Lee

Anishinaabe miinwaa Wiisaakode bemaadziig kina ngoji dnakiiwog maampii Geneda—odenaang, anishinabe kiin, zaagji odenaang miinwaa bagwadkamig, miinwaa odenwesin miinwaa gitchi odenwining.

Kina gwa endnaakiin, yaawog bemaadziig gotaanaa mjizhiwebziiwin ensa giishgag—gaawii gwa megizid, ninda bemaadzinjin ezaagaawaad, aangwodnang gwa endaa—aad. Niibna midaaswaak Anishinaabe miinwaa Wiisaakode bemaadziig—eshkniigjig apiinish getchi piitzijig—abiitanaa—aa wiisginezowin miinwaa biigde—ewin

Ngiikendaanaa gwa Anishinaabe kwewok miinwaa ninwok woshme gwa miibna giikendaanaa—aa mjizhiwebziiwin apiidash aanin bemaadziig maampii Geneda, miinwaa agiikenmaa—aan agaa mjidodaagwaad. Ndakenjgewin gindaaswinan 2009 Geneda agii mkaanaa— Anishinaabek (Anishinaabe, Wiisaakode, miinwaa Eshkiimeg) bemaadziig woshme gwa niizhing mnik agii dbaajmowog kendmowaad mjizhiwebziiwin goopjichigoowaad bekaanzinjin gaawii wiidgemaagniwaa apii dash anishinabe eyaawsig. Anishinaabe kwewok woshme gwa nizhing shi aabita goopchigowaan wiidgemaagniwaa, maage agaa shkwaa wiidgemaa—aad apii dash gaawii Anishinaabe eyaawsijig. Anishinaabe kwewok gegoo agii dbaajmowak gitchi mjizhiwebziiwin miinwaa gitchi wiisgitowin agii nkwehkmowaad. Naanoomya agii gnoowaabmdaanaa—aan dkonwenini zhibiigewinan gwanda RCMP miinwaa woshme niswaak dkonweninwok wiijiiewin maampii Geneda agii mkaanaa—aa Anishinaabe kwewok woshme baatiinwok agaa nsigaazjik miinwaa enaadziig zhibiiganin.

Niibna gwa temgad maanda enji zhiwebak. Ensa bboon, gwa—aanwi, niibna Anishinaabe miinwaa Wiisaakode kwewok miinwaa ninwok **NENDMOK** awii naadmaagaazwaad awii ngadmowaad mjizhiwebziiwin miinwaa agoobjichgewin.

Znagad agwa awii daabnigaadeg maanda shki tkokiiwin. Ensa giizhig gwa bimaadziwaad Anishinabe miinwaa Wiisaakode bemaadziig maampii Geneda baatiindani znagendmowin—dbishko gonaa gdimaagziiwin, aakoziwaadziwin, nsastagesiiwin, kinomaagewin nondeseg, nigaawendaagwok endaang, nigaa wiisining, mne—aag nakiiwin maage abangii debamaadin dbasi nakiiwin miinwaa bkaanenjgewin. Maandaa anike snagendmowin gaawii naadmaagesnwo awii debwe—endman bkaan aji zhiwekiba.

Giin **GDA** wenaamdaan awii ngaasdowin maanda baamskobdeg awii msendman giin miinwaa gdabnoojiimag, amii gdo bimaadziwin miinwaa gdabinoojiimag bimaadziwinwaa bkaan awii zhinaagwok.

WEGNESH MAANDA AGOOPJICHGEWIN?

“...kina gwa kwewok maampii inodewisiwin agii agoobjichgaazwok, nowonj gwa niki-aai, endgwengwa nendmowinin, jichaagin, maage wiyowin. Pane gwa ngiinendam maanda dnoowaa wiijgaabwitaadwin gwekwaag. Mii maanda ezhi webak. Ngooji wiigwa dinwendmowining, ngii gakendaan gawii maanda gegetago aawizino. Gaawii maanda gwekwaasno.”

(agii dingaade *Mshkosijigaadog owi Waaiye-aag awii Ekwaaseg Majidoodwindwaa Anishinaabe Kwewog, Nweshkdaadwin III awii Ekwaaseg Majidoodwindwaa Anishinaabe Kwewog—Ekwa Dibaajimowin*, agaa wiindamaagewaad gewe Ontario Waajiendwaad Anishinaabe Mino-wiijiindiwin Nweshkaage-gamigoon, Ode-imini giizis 2009)

- Giishpin anjida gwaya wiisgendmi-ig—gawii agipichi doodaagsii—agoopjichgewin aawan.
- Agoopjichgewin, wiyow, mazhiwe, nendmowin maage zhoonyaa adaa aawan.
- Agoopjichgewin zhiwebad *shkintam* wepdaagowin, dgishkaagowin, gaanjwebnigowin maage godaazomiwewin mjizhiwebziiwin, miinwaa gwa *ensa* zhiwebag miinwaa.
- Agoopjichgewin miinwaa mjizhiwebziiwin zhinda inodewiziwin azhiwebad kina gwa inaadizwin miinwaa dbigwa akiin yaa-in.

Niibna gwa nowonj dnoowaa agoopjichgewin **baataadwin** aawinon.

Bezhiq kwe agii kida,

“Gegaa ngii nsigwo woosa bboon. Ndaani gagiiigniwe-bnik apiinish awii nbowaan, ngii gshkitoon dash awii gjibowe-aan.”

(agii abi njibaamgad odi *Anishinaabe Kwewog miinwaa inodewiziwin Mjizhiwebziiwin, Geneda, Kichi Kiin Nakii-gamig enji Maawandoonigaadeg miinwaa maado'ooking owi inodewiziwin mjizhiwebziiwin, Ottawa: Bamaadzijig Mina-yaawin Nakiigamig maampii Geneda, 2008*).

Baataadwin agii dbaad-daan.

Wiyow agoopjichgewin agiishpin gwaya nikaazad mashkawiziwin awii wiisgignaamig. Ninda dnoowaa wiyow agoopjichgewin aawinon:

- giibnewebnigong maage gibwanaamowin
- jaagzigewin
- Gaanjwebnigen maage gaandsachgen
- dgishkaagewin
- bikwaakoninj nikaazan maage wepjigewin
- miinjisan wiikbijgaadeg
- Aadaakwaagowin aajkinganin maage mjignigowin ezhi diwendzii-in.

Kina gwa wiyow goopjichgewin baataadwin aawan.

Mazhiwe goopjichgewin aawan jiimgowin, daangnigowin maage ktweewikaagowin awii mazhiwe nankiin (agiishpin gegwa gwiidgemaagan aawid) *agiishpin dowendzii-in* aawan mazhiwe goopjichgewin. Baamtaagooswan kidyin “Boontaan” aawan goopjichgewin.

Mazhiwe goopjichgewin aawan agiishpin ayaaman mazhiwewin maaba:

- gniijaanis, aankwobjigan, gwiikaane, giidgikon; maage
- binoojiin zaam oshk-ayag-aawi awii ganabendan gego awii zhiwebdan-ig, dbishkogonaa mdaaswi zhi ngodwoswi epiitzisig (giishpin wiigwo wiiji piitziindwod), maage jibwaa mdaaswi shi nshwoswi piitziwaad agiishpin wijiwaaganan debenmiwad (dbishko gwanaa eknoomaaged, name-nini maage naagaanzid mnendaagziwin).

Mazhiwe goopjichgewin aawan baabnajaazad binoojiin mdaaswi shi nshwoswi epiitzisig mzinaazgan nikaazan maage bishigwaajawin, miinwaa age mazhiwe nikaazan awii debnigaadeg mji mshkiki, mshkode aabo, genaajawan agwiwinan, miinwaa.

Kina agwa mazhiwe goopjichgewinan baataadwinan aawanon.

“Ngii bgidnaa awii wepdowit awii bwaa nsaad bezhig n’dabnoojii’iman.”

(agii abi njibaamgad odi *Anishinaabe Kwewog miinwaa inodewiziwin Mjizhiwebziwin*, Geneda, Kichi Kiin Nakii-gamig enji Maawandoonigaadeg miinwaa maado’ookiing owi inodewiziwin mjizhiwebziwin, Ottawa: Bamaadzijig Mina-yaawin Nakiigamig maampii Geneda, 2008).

Enendman goopjichgewin aangwodnan **gagwaadagen goopjichgewin** azhinkaade. Zhiwebad maanda agiishpin gwayaa bnaajtwod ezhi mina-nendizyin, maage gjitwod awii dibenmig, zegendmi-ig maage gibaakwok. Aanimentamowin, maanaadendmowin miinwaa gwiinwi-nendmowin gdo bsigaagon agiishpin maanda zhiwebzii-in.

Aanin maanda enendman goopjichgewin adaa aawan baataadwin, miinwaa:

- zegendmowin awii nisig maage awii wiisgagnaamig maage awii mjidoodwaad gwaya gekenmad maage e-zaagad;
- abiigwan maage nshinaajtwod gdibnewiziwin, wiisgignaamaad bami-aagaansan maage zegendmowig awii wiisgaabnewaad;
- naa-noopnanig, kowaabmig, awii zegendmi-ig awii niizaanendman awii mjidoodaagaazyin, maage gwayaa getchi nenmad awii majidoodwind (omamaazhii miikiniji’iwe maage inashkoon aawan maanda).

“... gdoo dbasenamig amiidash miinwaa gzaagin akidad.”

(agii abi njibaamgad odi *Anishinaabe Kwewog miinwaa inodewiziwin Mjizhiwebziwin*, Geneda, Kichi Kiin Nakii-gamig enji Maawandoonigaadeg miinwaa maado'ookiing owi inodewiziwin mjizhiwebziwin, Ottawa: Bamaadzijig Mina-yaawin Nakiigamig maampii Geneda, 2008).

Aanin gwa ninda enendaman goopjichgewin gaawii baataadwinan adaa aawizinon, abooj wiigwa wiisgikaagemgad. Aangodinong agwa enendaman goopjichgewin, wiyyow maage mazhiwe goodjichgewin adaa ani aawan agiishpin ngaasjigaadesnag. Gaawiin agwa gwaya gdaa baabnadaagsii miinwaa gdaa dbasenamigsii, gdaa giikaamigsii miinwaa wiindmaag gaawii gegwa gdinaabdisii maage dabasi-bagidening niigaan bemaadzijig yaawaad, dbishko gonaa inodewiziwin maage gwiichkiwenig.

Ninda mna wiijii-endwin, waajiiendjig dazhindaanaa gegwa. Ganimaa agwa adaa gjitoonaa-aa awii azhichgewin enendmowaad, gaawii siigwa adaa gjitoosiin awii dibendang enendaman. Dbishkwo gonaa, gawiin gwayaa gdaa baabaapnadziin ezhi debwe-endman, maage ngaashamig awii anankiiwin beshgendman maage awii waabmadwaa gwiiikenewig gechi pitenmajig. (Aabdeg wiigwa, binoojiin aawiyin, gagidziimag aabdeg agwii naagdewenmigwog miinwaa nendaagaziwok awii awaankiiwendaagzii-in miinwaa awii bwaa danoojtoo-eg gwiiikiwenig maage neniizaa-anag nankii-in aji wiisgitoomba.)

Enendaman goopjichgewin niibna gwa adaa zhinaagwad. Zegi'iwewin miinwaa dibenjgewin aniish aawinon memdage ezhiwebak, gewii dash gwa debenjgewin. Dbishko gwanaa aanin agwa agoopjichgewjig adaa godaazomwewinaa-aa awii nesididzod agiishpin gweji maajaanid wiijiiwaagana. Maanda dnoowaa dibenjgewin aawan goopjichgewin.

“Wiiyow goopjichgewin mji-iiwan miinwaa wewiib wiisgikaagemgad, biizitaagoziwin Gwiiijimgon miinwaa gbinaajigwan.”

(agii abi njibaamgad odi *Anishinaabe Kwewog miinwaa inodewiziwin Mjizhiwebziwin*, Geneda, Kichi Kiin Nakii-gamig enji Maawandoonigaadeg miinwaa maado'ookiing owi inodewiziwin mjizhiwebziwin, Ottawa: Bamaadzijig Mina-yaawin Nakiigamig maampii Geneda, 2008).

Gegwa boonendge nendmowin goopjichgewin. Ojiishiwinan agwaa aapaji zoongsinon miinwaa apane temgadwon.

Zhoonyaa goopjichgewin zhiwebad agiishpin agwayaa zhoonyaa nikaazad awii dibenmig. Wiikajitoonaa-aa awii yaanzowan zhoonyaa awii ngandwaa maage awii naakwii-in. Aangodinong agwa n'dajichgewok awii znagag awii nakiiwin, maage agiishpin zhaazhigwa nakii'in, nda zhichgewok awii znagziwin awii aabji nakii'in.

Aanin gwa zhoonyaa goopjichgewin baataadwin adaa aawan, dbishkwo gonaa:

- daapanang agaa gshkitoowin maage zhoonyaa maage giimooj gdaangibiigewin nikaazad awii meshkdoonang zhoonyaa iwiibiigensim;
- gmoodmigowin gdibendaasawin;
- miigwesig nendwendaagwog mijin, dabinoo'igan, agwiwinan maage mina-yaawin naagdiwenjgewin giin, binojii'ig mdaaswi shi ngwodwaaswi epiitziisigwaa maage gwayaa epenmandaag.

Aanin zhoonyaa goopjichgewin gawii baataadowin oada aawizino, wiisgikaagemgaad agwa, miinwaa gaawii gwek aawzinoo gwayaa awii:

- agednaamiikaag awii maadinaman endaa-in, gdoo daabaan maage zhoonyaa gamigoon eyaaman;
- kina mzinigewin atood gdinozwining giin aabdeg aawii dbaman;
- aaagonwetaag awii naagdedendaman inoodezewiwin zhoonyaa agiin awii nikaazyin.

Bezhiig agawa gechi piitendaagwog dbaadaming goopjichgewin aawan **gikinaweyenim** dodaamowin gashki'ewizin awii yaang maandaan nikii-aa:

- gdo zegendmi-ig, gwiinwinendmi-ig, mamaazhii-in nendman, menisendizyin amaage gwiinwinendman awaa zhiwebak;
- ngaabnigowin agiishpin dowendman aawii maajaa-in;
- bgidnigoosawan awii giigda-in maage awii kidyin enwendman wiindmaagowin awii bekaayaa-in maage bgidnigoosiwan awii kidyin enendman.

“Ntam maamaa-in endaanid ngii azhaa. Mji waadiged-ikwe gdaaw, ngii-ig, gwiikwajitamaasan gwaa awii aabiinjigwo-in. ... Kina agwa dinwendaagnag dwiindmaagoog awii bzaanyaa-aan 'inoodezewiwin babaamiziwin aawan awi.’”

(agii abi njibaamgad odi *Anishinaabe Kwewog miinwaa inoodezewiwin Mjizhiwebziwin*, Geneda, Kichi Kiin Nakii-gamig enji Maawandoonigaadeg miinwaa maado'ookiing owi inoodezewiwin mjizhiwebziwin, Ottawa: Bamaadzijig Mina-yaawin Nakiigamig maampii Geneda, 2008).

Gaawii nishisno goopjichgewin manjigwo-iidig agwa agaa kidyin maage gegoo agaazhi maazhii-ii, maage gwayaa agii “naajitood naadiwendan eshchiged” maage agiishkwebiid maage “shpiming bmiyaad shkwaa sgaswaad”. Giishpin gwaya wiindmaag agii “gwedwe-in awii goopjigoowin” gaawii debwesiwog.

Gichi-ayaag ago wiinwaa dibendaanaa—aa ekdoowaad miinwaa eshchigewaad.
Goopjichgewin agiin gwenaabandaan—mji wawenaamjigewin—gegaa agwa
pane majidoodmowin aawan.

**“Gaawion agiiwnaadizisii
Aaniish gegiizhi gkendmamba
Aawii ntood gbimaadziawin
Miinwaa agii book’ganaandan gdo kanan
Irene
Eshpaagin m’kizinan bmase’in zhashki miiknang
Ndo mandaagkwem Irene
Gzaagin Irene
Aaniish gaanji maajaaswan
Gdaagii ani maajaanaaba.”**

*Agii njibaamgad “Aanzhenii Mikan (Ganaajwi Irene)”
agii kinwaabiigaade agii bagidniged Lucie Idlout*

OWI “BIIMSKOOBDEG AGOOPJICHGEWIN”

Niibna agwa bemadzijig agii mkaanaa–aa goopjichgewin miinwaa mjizhiwebziiwin awoshme gwa nizhiwebag agiishpin bwaa gwedwen naadmaagewin. Maanda mzinbiigan waamdowebmgad age zhiwebkiba maanda. Nshkaadendmowin nbibdmgad maaba adash mejidoodan maajitaa “nengaa” agwa goopjichged—anaamjiged, baabnajibged maage dabasi–bagideniged. Maaba egoopjichgaazad adaa gjitooon awii bizaanendmowed, maage agwa daa nkwetam miinwaa agiikaawidam. Wegwen gwa iidig, eshkam agwaa nshkaadendmowin ani bishikaa apiinish agwa mjizhiwebziiwin amoogseg. Shkwaa zhiwebag agoopjichgewin, maaba agaa kichi maaskaad agiisaadendam—waawiindmaage gaawii miinwaa awii zhiwebsinag miinwaa, waawiindmaage awii gwedwed awii naadmaagaazad, maage godaasominiwed awii nsidzad agiishpin maajaa–in. Yaa–aabi agwa nshkaadendmowin ani bmibde, miidash agwa miinwaa goopjichgewin miinwaa biimskoobdeg. Ezhkam agwa, wewiib ninda goopjichgewinan zhiwebidoon, woshme gegwa adaa mshkoowiziimgad mjizhiwebziiwin.



Anishinabek kwe agaa zhiibaayishkan wiidigewin mjizhiwebziiwin, agii kida “Wiidigewin mjizhiwebziiwin—ensa bangii agwa geshtwod gwayaa awii zhichiged, agashtoonaa–aa awii dabasi–bagidenig niigaan yaawaad gwiichkenewig, negaaj wepdaag, gnikaan wepdaag, gichi wepdaaged, maage zgaandbebinik, asmaatik mjimshkaag agishtoonaa–aa. Giikendaan, maanaadad iwi. Aakoziwin aawan, eshkaam agwa woshme ani zhiwebad.”

“Gwiinwinendam” ana?

Gdandwendaan awii bwoni wiisgendman, aapji adash snagad awii debwe-endman dbaad-ada-man ezhiwebag maage gwedwewin awii naadmaagowin aji nanaatoowin ezhiwebag.

“Ngoodin ngii daabnaan bashkzigan ngii baataanaashkowaag aziingaak nda kwem miinwaa binojiinig. ... ‘Ngiikendaan agwa zaagi-in’ agii kida ‘Ngoodin awiigwa nga anib epiich zaagi-in.’”

(agii abi njibaamgad odi *Anishinaabe Kwewog miinwaa inodewiziwin Mjizhiwebziwin*, Geneda, Kichi Kiin Nakii-gamig enji Maawandoonigaadeg miinwaa maado'ookiing owi inodewiziwin mjizhiwebziwin, Ottawa: Bamaadzijig Mina-yaawin Nakiigamig maampii Geneda, 2008).

Niibna bemaadzijig agaa goopjichgaazjig dandwendaanaa-aa awii ngaashkaamagak mjizhiwebziwin miinwaa goopjichgewin, zegziwok giishpin ge zhiwebak agiishpin anaawitowaad ezhiwebag—wiinagwa, inoodewiziwinan, maage gwa awiya ezaagaad ewiisgindaagwod. Zegziwog gwandaa bemaadzijig gaawii gnimaa adaa naadmaagsiiwaan inoodewiziwan maage wiiiki-ewaan, aangoodnang agwa gaawii wewiib naadmaagesiiwog. Makwendan, gaawii eta giin gdijiwebzisi maanda. Gda binoojiinamag miinwaa maanji besha eyaajig gde-eng, miinwaa gegwa bemadzid egoopjichged, kina gwa baataashinoog maampii baamskoseg, apiinish gwayaa nendang awii kwedwed naadmaagewin. Giin agwa gdaa wenaamdaan agiishpin awii naawitowin gbi-maadziwin miinwaa gdinoodewiziwinan awii mnayaawaad.

Wiiigaabwitaadiwin, dbishkwo gwa bemaadzijig, adaa ganaandawiziwan maage gwa gaawii. Aangwodnang gwa aabdeg “mana mshkiki” gdaa dowaabmdaan, dbishkwo gona agagidoodamaagewin.

Gaawiiin ganaandawiziwin aawizino gwayaa awiijigendwat mjizhiwebziwin temgak.

Gdaa zaagaa agwa gwayaa, miinwaa gdaa zaagig, idash wiigwa yaa-aabi gdaakwaadzitaag miinwaa agoopji-ig, gzegis age, aangwaamzin. Mina wiiigaabwitaadin, gaawiiin gegwa zegziwin tesno.



AANIISH EZHIWEBZIWAAD GDABINOOJII-IG?

“Nshnaadenmowin maji–ishkodena aawinaani binoojiin–ig. Gwanda binoojiinig gaawii ngajtoowin daa–aanziinaa–aa awii gkendmowaad awaa zhichgewaad. Gwiinwinendmoog binoojiin–ig endgwen wiinyaa adindwinwaa aawang, nanagwa iin yaawog.”

(agii abi njibaamgad odi *Anishinaabe Kwewog miinwaa inodewiziwin Mjizhiwebziwin*, Geneda, Kichi Kiin Nakii–gamig enji Maawandoonigaadeg miinwaa maado’ookiing owi inodewiziwin mjizhiwebziwin, Ottawa: Bamaadzijig Mina–yaawin Nakiigamig maampii Geneda, 2008).

Aabdeg agwa binoojiin–ig meneswaad ntam agwii mkendaan. Giin gdaa waabmdowaag geshi ngaasgowaad maanda mjizhiwebziwin baamskobdeg, agiishpin gewiinwaa nkeskmowaad mjizhiwebziwin wiijigaabwitadiwin apii ani bigwaad.

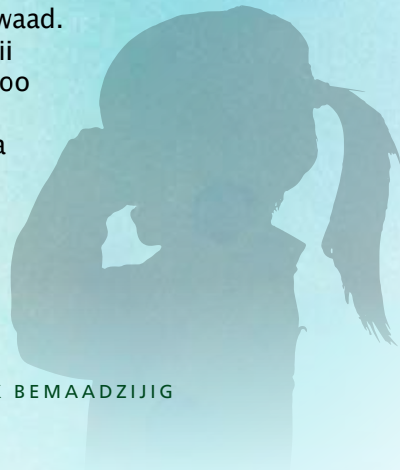
Binoojiin–ig aawog awaa gnaasdoowaad mjizhiwebziwin baamskobdeg. Waabdamwaad maage noondmowaad mjizhiwebziwin wiisgikaagnaawaa binoojiin–ig—bkaan gdi nwenmigoo miinwaa bkaan dinwenmaa–aan gwiidgemaagnan, miinwaa enendizwaad gewiinwaa. Miinwaa agwa waabmaawaad newin egoopji–wenjin, gawii memkaaj agadaa mnaadenmigossii.

Agikendaanaa–aa binoojiin–ig agoopjigowin, agiishpin agwa bagosendman awii bwaa waabmdamwaad.

Aaniish binoojiin–ig ezhi maanaajidoodwindwaa?

Ezhi psikaagwaad gwanda binoojiin–ig waabmdamwaad mjizhiwebziwin miinwaa agoopjichgewin gaawii pane waabmjigaadesno. Gwanda binoojiin–ig adaa kichi aakziywaadsiwog waabmdamwaad agoopjichgewin. Gwanda binoojiin–ig adaa wiisgaapnendizwog maage gwayaa aanin adaa wiisgaapnewaa–aan. Miinwaa age adaa ghabendaanaa–aa agoopjichgaazwaad zaam agii waabmigwok ezhchige’in wiijigaabwitaagewin.

Niibna agwa gaawii waankii–enziiwog, azhiingendizwok, gaawii agashtoosiinaa awii babaamendziwog skoongangoong, miinwaa “maaskaawok” abiisijgewaad, zegiwewaad, miinwaa wiisgaapniendizwaad. Aanin agwa binoojiin–ig gawii dandwendziinaa–aa awii nigiiwewaad, mji–mshkiki nikaazwaad, ishkodeewaaboo mnikwewaad, biidnaamtamwaad mji–mshkiki, agiishkoondiswaad, maage gweji nsidzowaad. Niibnaa agwa gwanda binoojiin–ig gaawii nishisnooni wiijigaabwitodiwin, zaam enibigwaad agii nendmoog kina gwaya inodewiziwinan miinwaa awiijigaabwitodwinin “ezaagidjig” wiisgaabnendoog. Gnima gegwa kichi gnesh wiisagitoowog maage wiisgendmog.



Aangodinong binoojiin-ig agiimooj wiisgendamoog. Aanin wiigjtonaa-aa awii nagonaagziwaad miinwaa aanin wiikajitonaa-aa awii “kichi mino izhiwebziwaad”.

“Agiishpin gwanda abi koognigaazwaad goopjichgewin temagak miigwe-eta binoojiin-ig ewaabmdamwaad, mii-awi ezhi bmaadziwaad. Awiiinwaa ezhignowaabmdamwaad amii maanda ezhi bimaadzin. ... Adoo gnaashamignaa-aa awii binoojiinwiwaad.”

(agii abi njibaamgad odi *Anishinaabe Kwewog miinwaa inodewiziwin Mjizhiwebziwin*, Geneda, Kichi Kiin Nakii-gamig enji Maawandoonigaadeg miinwaa maado'ookiing owi inodewiziwin mjizhiwebziwin, Ottawa: Bamaadzijig Mina-yaawin Nakiigamig maampii Geneda, 2008).

Agiishpin agoopjigowin, aapaji agwa zngad awii naagdewendmadwaa gdabinoojiin-amak. Aapaji agwa gde-ekzinaadig apane, aapji agwa zngad awii miindwaa nendwendmowaad, gdinendam.

Gdaa gagaanzmaag binoojiin-ig awii waabmaa-aad miinwaa awii nbwaachaa-aad dinwendaagniwaan, getchi piitzinjim, maage wiijke-ewin age aasgaabwitaagwaad apiichi giweksidoowin gbimaadziwin.

Agiishpin gda binoojiinmag gewiinwaa awiisgaabnajgaazwaad, wewiib gwedwen naadmaagewin. Binoojiin goopjichgaazad baataadawin aawan. Agiishpin agoopjigowin, miinwaa binoojiin-ig eyaawaad, naaknigewin temigad aabdeg giin maage gwaya bekonzid awii gnonaad binoojii-ig nyaagdewenmaajig.

Binoojiin-ig abdek gnawenjgaazwok wiibwaa agoopjichgaazwaad!



AANIISH MAANDA ENJI ZHIWEBZII-AAN?

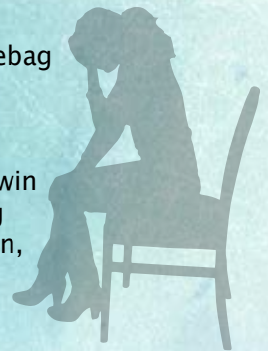
A goopjichgewin m'ji-iiwan kina gwa inoodevisinwan miinwaa odenwin, gigi agwa Anishinaabek miinwaa Wiisaakodek inoodewiziwinwan miinwaa odenwin. Aanwi agwa mjzhiwebziwin miinwaa goopjichgewin temgad niibna odewiwinan miinwaa inaadiziwinan, ganabenjgaadeg agoopjichgewin gaawii dibendaagsinoo maampii Anishinaabe miinwaa Wiisaakode inaadiziwin miinwaa debwendmowinan.

Zhaazhigwa agaabi zhiwebag, Anishinaabe inaadiziwin agii penmandaagemgad kina agwa agaazhi miigwewaad ninwok, kwewok, Getch-piitzijig miinwaa binojiin-ig. Kina agwa gwayaa agii miikse giitaagaabwiwin agaa mnaadenjgaadeg miinwaa agaa kitchi piitenjgaadeg. Kwewok agwa aapaji agii mshkoogaabwiwog enji aanikoominodewiwinin. Agii kichi piitendaagoziwog agii biidowaad shki bimaadziwin miinwaa naagdewenmaa-aad inoodewiziwinwaa miinwaa agwa kinaa waaji dnakiimaawaad.

“...ashki-danabiwewin ... agii waabamijigaade endnakiwaad agii naajitowaad naagdiwendmowaad inoodewiziwinin miinwaa inaadiziwinwaa. ... Ninda agaa bsikaagemgak agii makamgaazwaad binoojiinig miinwaa agoopjichgewin agaa zhiibendmowaad maampii skoogamgoon maamawi daang agii aningaade aanike-bimaadiziwinan ... “amii agii maajiishkaamagag anike-bimaadiziwin wiisgendmowin anikesemagag Anishinaabe inoodewiziwinan, dabinoojimowaan, miinwaa wooshenawaan.””

(Anishinaabek Goopajichigewin maapii Geneda: Maandobiigan owi Zhibiigewin, Agaa Goopajichigaazjig owi Maji-doodamowin Nanaadowi-gikenjiwen Mazinigan Ekwa Nsing, Isshkgimizige-giizis 2010).

- Dabasendigewin miinwaa agaa ondziiying ninda skoongamigwan maamwidaan naadmaagemgad ninda gikinaweyenin aakwaadiziwin, gwaabmdaanaa agwa maanda anji zhiwebziwaad Anishinaabe miinwaa Wiisaakode inoodewiziniwaan miinwaa odenaang.
- Ndakenjgewinan agii zhinoowaanaa-aan ninda bkaan ezhiwebag zaagji-awiin abi njibaamagag gaa bsikaagwaad kichi gete Anishinaabe wiijiwewin, wiisgendmowin agii zhiwebad maanda anji agii naajchigaadeg Anishinaabe kinomaagewin, inaadiziwin miinwaa gdiniwewinaa. Maanda wiisigewendimowin agii bsikaaganaa-aa bemaadzijig miinwaa aanike bemaadzijig agii naajchigaade apiitendmowin miinwaa awii penmandaadin, amiidash agii bgamshkaamgag banaadendisiwin miinwaa bwaanawichigewin gwanda Anishinaabe miinwaa Wiisaakode bemaadzijig.
- Amii adash ezhiwebag, niibna agwaa Anishinaabe odenwinan, inoowediziwin mjzhiwebziwin gaawii gweta bezhig inoowediziwin maage bemaadziid ado bsikaagsiin, amii dash gwa aabdeg kina agwa adaa naandwechgaazwog,



miinwaa bezhig bemaadziid miinwaa bezhig inowediziwinan. Amii maanda aabdeg awaa nsastaming aawii wenaabandaman ganaadawiziwin, miinwaa wenjishing gbimaadziinaang.

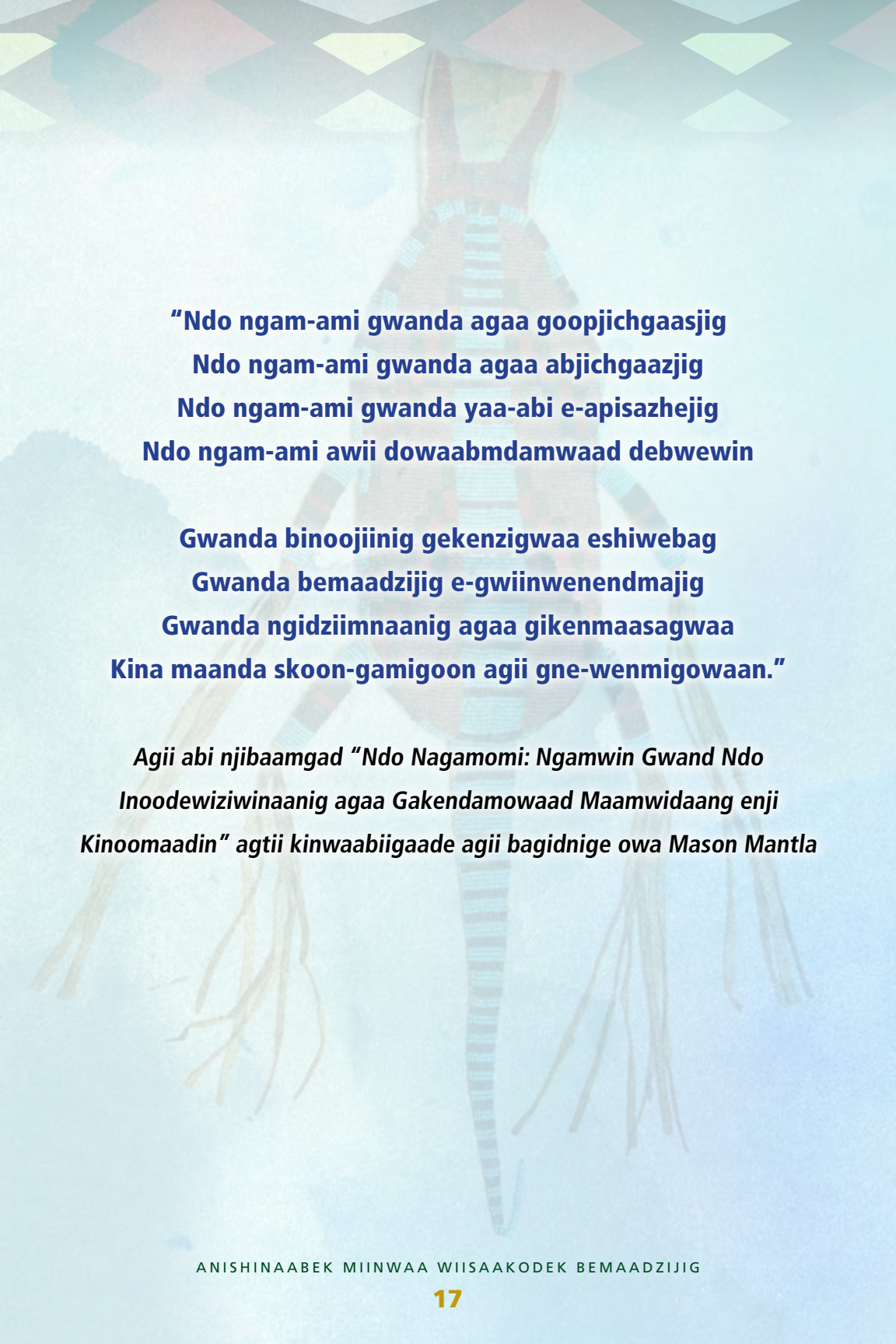
- Binoojiinig waabmdamwaad mjizhiwebziwin miinwaa agoopjichgewin endaawaad naadmaagemgad awii aabjibdeg mjiwii aanike-bimaadiziwinan. Waabmjigaadeg ezhiwebak, wenpanad kwezensag awii nendmowaad agoopjichgewin temgad kwe bimaadziwin, miinwaa wiizensag nendmowok aninwok diwendaagziwok awii mjiwebziitwaa-aad miinwaa awii goopjiwaa-aad kwewon, agiishpin maanaaji zhiwebziwaad, maage zegziwaad, maage maanaadenmowaad.

Gaawii agwa kidsiim kina gwa binoojiinig ewaabmdamwaad inoodewizin mjizhewbziwin ada agoopjichgesiwwog maage awii agoopjichgaazwaad. Binoojiinig agwa agaabi koogningaazwaad mjishiwebzii-in temgak, adaa basabaagadog, gaawii adash daa goopjichgesiwwog maage gaawii adaa goobjichgaasiwwog aani taawigiwaad, adaa wenaamdaanaa-aa awii bwaa agoopjichgewaad maage awii agoopjichgaazwaad. Egitziiimgejig miinwaa aanin gechi piitzijig adaa bami'aawasonaa'aa dabnoojiimiwaan, miinwaa agwa kina binoojiin-ig endaajig odenaang. Awii zhichgaadeg mina waadziwin gwanda binoojiin-ig kitchi piitendaagwad manjigwa iidik ezhiwebzii-in.

Aangoodnang gaawii maamdaa awii ngaasjigaadeg agoopjichgewin. Inoodewiziwinan naadmegewin adaa debnaanaa-aa awii ngaasjigaadeg mjizhiwebziwin baamskokaag miinwaa agoopjichgewin, awii nakiin awii wiikjichgaadeg mina-yaawin miinwaa bizaanendmowin.

Mjizhiwebziwin miinwaa agoopjichgewin naangoodnang anji maajtaamgad zhoonyaa zmagendmowemgag, nshkaadend-amang, gazhawenjeng, gshkitoosiin aawii ngaashmidzad maage agwa noowonj ezhiwebag ensa giijigak. Niibna gwa Anishinaabe odenwinan miinwaa Wiisaakode odenwinan gawii demnig tesnoon enishin wiigwaaman, miinwaa zaam niibnaa yaawog waajgendaadijig azhi godagitooyendaagwog bimaadzin. Aanin bemaadzijig, gaawii nakiitaagesiiwwog, naajtoonaa-aa naagdiwendiziwin miinwaa wiiyow miinwaa enmanjiwang gwexseni zaam dibenmigwaad mshkode aabo miinwaa mji mshkiki kina miigwemgad mji bmaadziwin dagosinon agoopjichgewin miinwaa mjizhiwebziwin.

Manjgwo iidig ezhi maajtaamgak, agoopjichgewin miinwaa mjizhiwebzii-in inoodewiziwin miinwaa wiijigaabwitodwin anike zhiwebad zaam aanin bemaadzijig debwe-endmog awiinwaa—enwendmowaad, nendwendmowaad, meneswaad, gwiinwinendmowin—woshme “gitchi ishpendaagwad” apiidash gwayaa pkaan, boochigo ne'en ekidowaad zaagaa-aad. Amiidash, “bgidnizwaad” awii wiisgendmowaa-aad ne'en bemaadzinjin, niiba nching gwa gwayaa geshtosig awii nanaakwiinid, dbishkwo gonaa wiidgemaagnan, binoojiin maage Gechi piitzid. Aanwii agwa maaba ewiisgaapnajged gawii nistadziin enji dodang maanda, gaawii maanda daa aawizino awii mjidoodwaad maage awii biigoni-aad gwayaa, miinwaa gaawii damtaagsinon ninda endoodwaad gwayaa.



**“Ndo ngam-ami gwanda agaa goopjichgaasjig
Ndo ngam-ami gwanda agaa abjichgaazjig
Ndo ngam-ami gwanda yaa-abi e-apisazhejig
Ndo ngam-ami awii dowaabmdamwaad debwewin**

**Gwanda binoojiinig gekenzigwaa eshiwebag
Gwanda bemaadzijig e-gwiinwenendmajig
Gwanda ngidziimnaanig agaa gikenmaasagwaa
Kina maanda skoon-gamigoon agii gne-wenmigowaan.”**

*Agii abi njibaamgad “Ndo Nagamomi: Ngamwin Gwand Ndo
Inoodewiziwinaanig agaa Gakendamowaad Maamwidaang enji
Kinoomaadin” agtii kinwaabiigaade agii bagidnige owa Mason Mantla*

Dakenjigewin agii waabmdowemgad niibna agaa zhaabwiiwaad agii zhaa-aad skoongamgoon maamawi adaan agii mkaanaa-aa waazhi ganawendizwaad, dbishko gonaa, bzaanyaawaad, debwetzigwaa agaa zhiwebziwaad, miinwaa wiikjitowaad awiibwaa waabminddwa. Ninda agaa gkendmowaad gikaadendaagoziwin awiinwaa miinwaa adabnoojiinmiwaan, ashi dowendziwaad awii dbaatamwaad inodewiziwin miinwaa endnakiwaad ezhi znagak, miinwaa awii gwedwewaad awii naadmaagaazwaad. Gwiinwinendmowin age temgad, zaam agii naajtowaad inaadiziwin miinwaa anishinabe kinomaagewinan, miinwaa waazhi nikaazan Getchi Piitzijig kinoomaagewinan nangwa maampii aanikoominodewiwin.

“Kina agwa gwayaa giikendaan ezhiwebak, gaawii adash gwayaa gegoo nda zhichesii.”

(agii abi njibaamgad odi *Anishinaabe Kwewog miinwaa inodewiziwin Mjizhiwebziwin*, Geneda, Kichi Kiin Nakii-gamig enji Maawandoonigaadeg miinwaa maado'ookiing owi inodewiziwin mjizhiwebziwin, Ottawa: Bamaadzijig Mina-yaawin Nakiigamig maampii Geneda, 2008).

Eshkniigjig agaabi koognigaasjig mjizhiwebziwin endaawaad agii tenig, aangoodnang wiindmowaawog “Gegwa dbaadadange ezhiwebak”. Gikenwaabmaa-aan gichi-aya-aawinan awii danendaziinaa-aa awii naadmaagaazwaad, miinwaa gegwa nendamoog, gaawii gegwa naabdaznoo awii aanjitoowaad gikinaweyenin mjizhiwebziwin. Ndowendziwaad awii dbaadataamwaad mjizhiwebziwin miinwaa goopjichgewin aanike wiisgitowin ada temgad.

Agaawii agwayaa gdoo ganawenimaasii maage naadmoowaasii agaa wiisgendmowig bwaa dbaadaman ezhiwebak.

Inodewiziwin mjizhiwebziwin baamskoobdeg aabdeg ninwog miinwaa kwewog awii biigbidoonaa-aa woshme niibna binoojiin-ig jibwaa psikaagwaad ezhiwebag.

Noojimowin ada bgamshkaa zoongichigaazwaad inodewiziwinag nikaazan inaadizwin gkendmowin.

JICHAAGOWIN KINOOMAAGEWINAN

Niibna agwa Anishinaabek miinwaa Wiisaakodek aginwaabmdaanaa—aa mina—yaawin miinwaa mina maadziwin nikaazwaad jichaag kinomaagewin, dbishkogwanaa *Mina Mashkikiiwin Egiitaasin* kinomaagewinan. Maaba Mina Mashkikiiwin Egiitaasin, kina agwa niiwin baakibii—iganan wiijabizondoog miinwaa wiji nakiindwog awii mina—yaan, awii mnanendaman miinwaa awii mana—zhiyaang. Ensa bezhig agwa ninda atisiganan wiindimaaibiigan nowonj nakeyaa (giiwedngang, waabanang, zhaawnang, epingishmok) miinwaa nowonj ezhi maajiiging wiiyow.



Niin gdinwendaagan ndaaw; Giizis nbapaa aawi, enji maajtaamgag bimaadziwin; Aki nma—maa aawi, bimaadziwin maagwed; Dbik Giisis, Nokomis aawi, waase'aag maagwed dbikag; miinwaa Gizhep Anang nmishoomis aawi, gekinoowizhiwed maagwed shki giizhigad.

Mina Mashkikiiwin Egiitaasin adaa wwabmdoowenan izhiwebziwin miinwaa enmanjiwan waajiemgaag mjizhiwebziwin inoodewizinan miinwa adaa manwaabidad aawii dowaabmjigaadeg aawii mkigaadeg zhichgewin aawii naawchigaadeg wiijgaabwitaadwin mjizhiwebziwin.

Maanda Nwendmowin baakibiigan: Nda gkendman gaabizhiwebag gda kiimnan, epideg inoodewiziwin mjizhiwebziwin maage nanaawitowin gekendman naadmaagemgad awii mna nwendman.

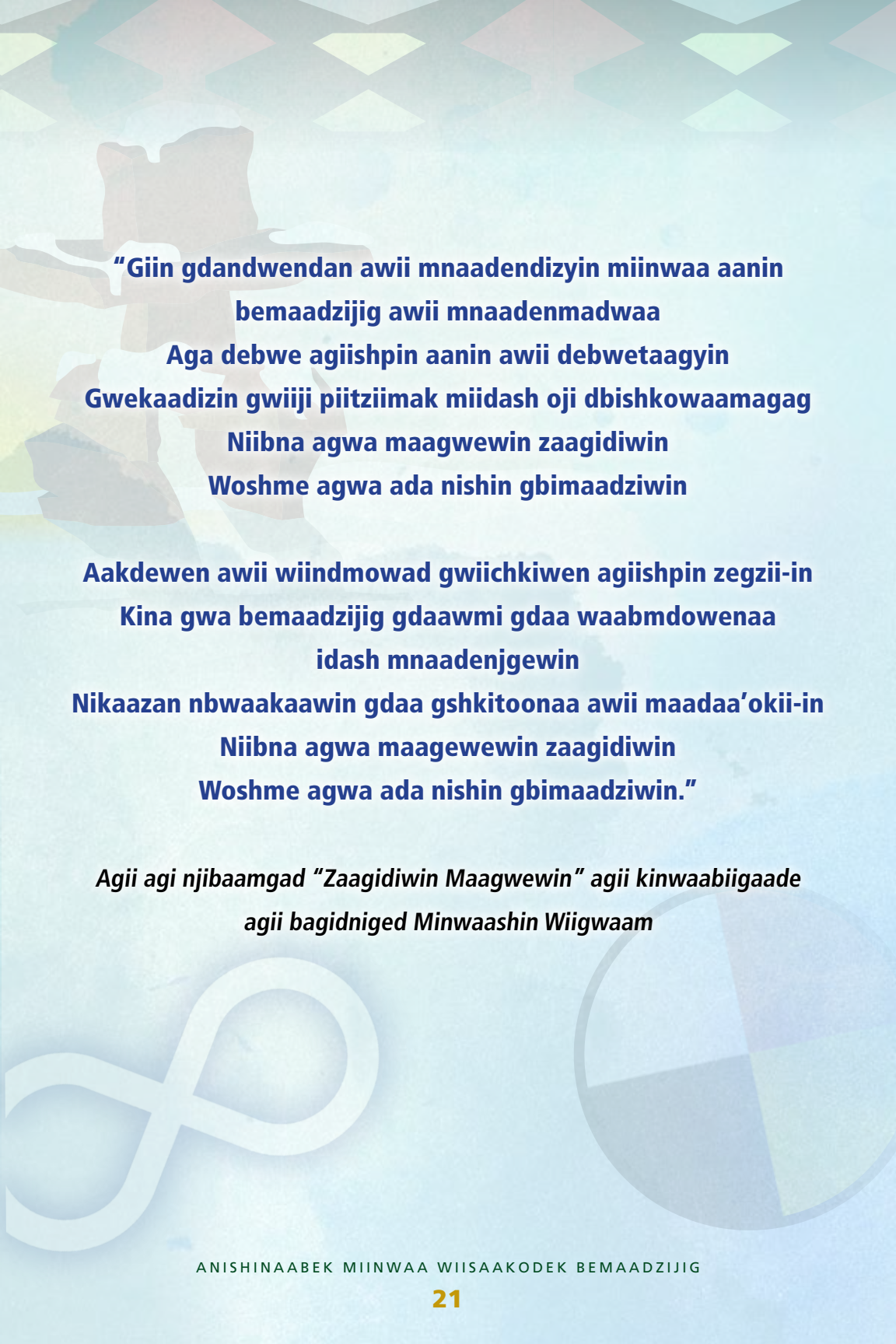
Maanda Jichaag baakibiigan: Wijiwiwen inaadziwin nakmigok, dbishko gwanaa abaabasigen, madaadiswan zagaswe'iden maage anishinabe niimwin awinoon awii noojmoomgak ojichaag.

Maanda Wiiyow baakibiigan: Naagdawendiman gwiiyow gwedwewin mina-yaawin, nakiitowin gwiiyow maage beshgendman awii nankii-in gnaadmaadaan gwiiyow awii mna-yaamigag. Ishkode-aaboo miinwaa mshkiki baapinajgaadeg gaawii mnakaamgasnoo.

Maanda Enmanjiwang baakibiigan: Wijiidwo bemaadzijig beshgenmajig (dbishkwo gonaa wiji baapin) mina-yaawiimgad and aabziiwendmaagemgad; ginoondwaa gechi piitzijig gisikawizimgad enmanjiwin, miinwaa gnaadmaagwan awii waaabmidaman ezhiwebziiwin gegeti agwa ezhinaagwok.

Agiishpin goophjiwemigag gwijjgaabwitadiwin, agiin miinwaa gdabinoojiinamak gaawii ada debnaziinaa-aa mina-yaawin, mina-zhayaawin miinwaa mnabidewin amii ezhi maajtaamagag Mina Mashkikiwin Egiitaasin kinomaagewinan.

Aanin agwa yaa-abi Jichaagan kinomaagewinan, dbishko goona Nshwaaswi Mishoomsag kinoomaagewin, gewiin dbaataanaa-aa, mnaadendiwin, gwekwaadziwin miinwaa debwewin aawinon awii mina wiijgaabwitaadin.



**“Giin gdandwendan awii mnaadendizyin miinwaa aanin
bemaadzijig awii mnaadenmadwaa
Aga debwe agiishpin aanin awii debwetaagyin
Gwekaadizin gwiiji piitziimak miidash oji dbishkowaamagag
Niibna agwa maagwewin zaagidiwin
Woshme agwa ada nishin gbimaadziwin**

**Aakdewen awii wiindmowad gwiichkiwen agiishpin zegzii-in
Kina gwa bemaadzijig gdaawmi gdaa waabmdowenaa
idash mnaadenjgewin
Nikaazan nbwaakaawin gdaa gshkitoonaa awii maadaa’okii-in
Niibna agwa maagewewin zaagidiwin
Woshme agwa ada nishin gbimaadziwin.”**

***Agii agi njibaamgad “Zaagidiwin Maagwewin” agii kinwaabiigaade
agii bagidniged Minwaashin Wiigwaam***

WOSHME ANA NISHIN BWAA MAAJAA-AAN MAAGE ANIMAAJAA-AAN?

Ntam agwa aabdeg awii waankiiwog gdabinoojiinmag, miinwaa giin.

Giin gwa gda nendam awii nimaajaa-in ajina maage gwa awii apiji maajaa-giin. Giin gwa ezhi wenaamdaman awaa zhichgewin, gaawin agwa memkatch adaa ekwaawzino wiidgendiwin maage wiijigaabwitaadiwin—amii wiigwa maanda nendwenaagwog awii aanjtowin ezhiwebak.

Gnimaa gwa gda zegis inoodewisiwin miinwaa gwiiikiwenig gdaa naamigwok agii webnidin. Gdaa wiindmowaag gaawii agii wenpansino awii naganad gwiidgemaagan maage gwiichkiwen gaawii adash nishisno aawii gkidoowin agaa jichged maaba e'goopji-ig, gaawii ada naadmaagsiin awii noojimad. Aabde agwaa gwii zhaabwiiwdis ntam jibwaa zhaabwii-ad bekonzit.

Gnabendaman gdabinoojiinmag awii nendmowaad mjizhiwebziwin gaawii maji-ii aawzinag ada psikaagemagad ani waani zhayaawaad. Giishpin animaaajaa-in, gwaabmdoowag gdabinoojiinmag temgad age zhichgemba mjizhiwebzii-in temgag gbi maadiziwinan.

Mkwendan agiishpin niizaanendman maage zegzii-in wiijigaabwitaagewin, agoopjichige wiijigaabwitaadowin gdaa-aan. Agiishpin ngoodin agii aabiinjigowin, megwaaj agwa miinwaa eko niizhing, miinwaa nsing aga aabiinjigoo ... miinwaa gwa woshme niibnanching. Mjizhiwebziwin miinwaa goopjichgewin awoshime ni aawan agiishpin abwaa nk weshkgaadeg miinwaa gwedwen awii naadmaagowin.

Apii zhitowin onaakonon, kwe gwejimidzan:

- Eshkam na maaba egoopjiwig woshme ani mjizhiwebzi?
- Maabe bemaadzid:
 - agii nikaazan na bamagaanwinan, dbishkwo gonaa mookimaan, mtik, maage baashkzigan awii wiisgaapnewid?
 - wiiyawin maage mashiwe agoopjiwaad ndabnoojiimag?
 - agii godaasomiwen awii nsig maage awii nsaad ndabnoojiimag?
 - agii godaazomiwe awii nsidzad?
 - agii ktweyiikaag awii mashiwed?
 - agii aabji daabnang ana miji mshkiki maage mshkode'aabo?
- Mshkiki maage mshkode aabo ana dinkaazan awii nk weshkmaa wiisgendmowin?
- Nzegis ana gdabinoojiinmag gegoo awii zhiwebziwaad?
- Zegiziwog niijkiwenig miinwaa inoodewiziwan gegoo awii zhiwebzii-aan?
- Aaniish godoagitooyendamowin miinwaa mjizhewebzii-in endoodaagyaa miinwaa gdabinoojiinmag endodaagwaad?

- Aaniish ezhi debenmid miinwaa gzhaawenjged maabe bemaadzid egoopji-id?
- Minwendam ana maabe bemaadzid awii gagingoonind maage awii naadmowind?

AANIISH AGIISHPIN BWAA MAAJAA-AAN?

Aangoodnang gwa gda wiindmaagwo abdeg gwa maamwii inoodewiziwin maawi awiiaawog, memdage agwa giishpin kwe awayin ... manjgo-iidig ezhiwebak, maage apiichi znagak. Gnima agwa gdaa wiindmaagwo amii agaa zhichgewaad gidziimag miinwaa aanike gidziimak. Kwewok, miinwaa aangodnang ninwok, gagetnaamgowaan dinoodewizinan miinwaa wiijkiwe-in inoodewiziwinan, awii wiijigaabwitwaa-aad ninda mejzhiwebzinjin maage agoopjichgenid. Maage adaa wiindmaagaazwok gaawii Manido dandwendziin awii maajaa-in, maage gaawii Anishinaabe kinomaagewin ado bgidnaziin maanda.

Niibnaa odenwinin, naabmaawok bemaadzijig miinwaa niisaiing bgidnigaazwok agiishpin dbaatamwaad goopjichgewin maage nganaa-aad wiijkiwe-waan. Niiba'iing agwa, gaawii gwiindmaagosii mji-iiwang goopjichgewin miinwaa baataadwin awang. Znadag awii maajaang, giishpin gegwa ajina eta. Aapiji agwa znadag awii bmigaazwaad binoojiin-ig endawaad, miinwaa egaachigin odenwinan, gaawii ngoji awaa zhaang awii waankiin.

Znadag awii maajaa-in agiishpin yaa-aabi zaagad gwaya. Gaawiiin gnishikewizisii agiishpin maanda nendman, miinwaa gaawii maanaadsino maage mji-iisino yaa-abi awii zaagadwaa. Niibna bemaadzijig dowendaanaa-aa awii wiiji aawaad wiijkiwewaan ... dandwendaanaa-aa goweta awii ngaaskaag mjizhiwebziwin. Aapaji agwa bgosendmoog epitchi dewewaad awii gweksenik eshiyaad, wii mna zhiwebzid miinwaa awii zaagiwed. Giin miinwaa gwijkiwen aabdeg gwii dowendaanaa-aa awii gwekisijigeweg awii wiijgendaadyeg miinwaa awii waankii-eg.

Giishpin wiisgaapne'in, gwedwen aakizii nini awii waabamad. Gaawii gwa memkaaj gdaa dbaajmasii agaa zhiwebak gaanji wiisgaapne'in. Boch wiigwa woshme wenpanad awii naandwigowin agiishpin dbaajmowin agaa zhiwebak. Aga wiindmaagwok age zhaa-in awii gwedwe'in naadmaagewin maage aasgaabwitaagewin ezhiwebzii-in endaa-in.

Nishin agwa awii maaji mkwendaman, miinwaa awii naaknigewin age zhichgewin giishpin niizaanendaagwok—gnima wewiib aabdeg awii maajaa-in.

Gda binoojiinmag bimaadziwinwaa miinwaa gegii gbimaadziwin penmandaagwad waa zhichge'in.

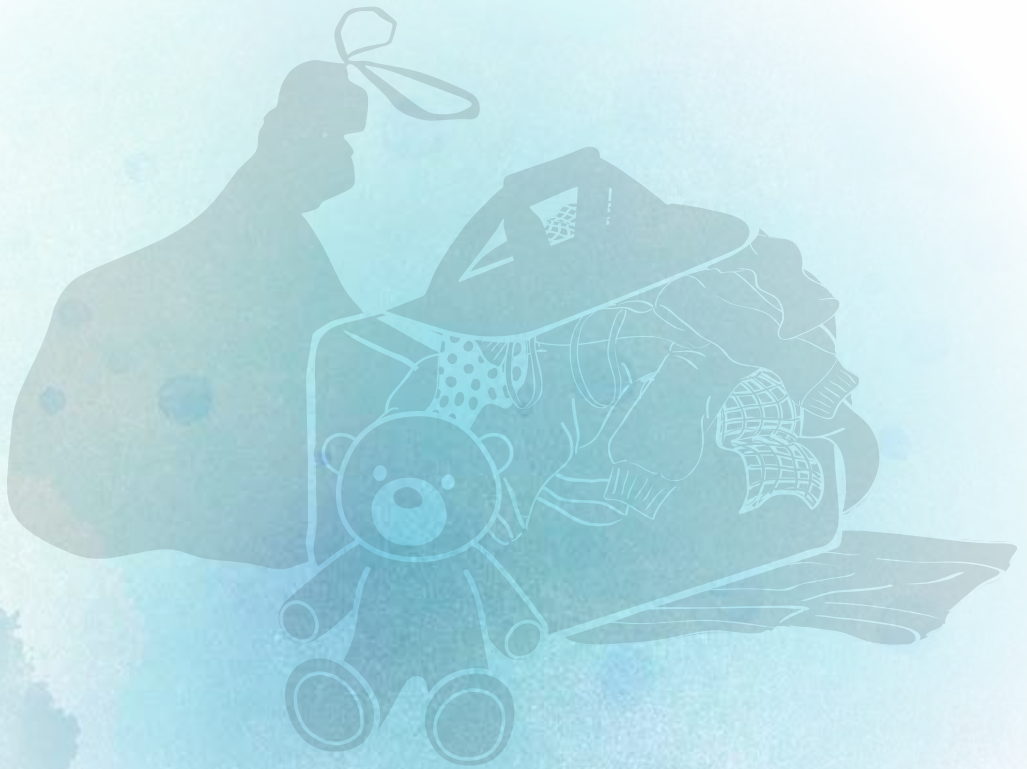
AANIISH AGIISHPIN ANIMAAJAA-AAN?

Manjigwa-iidig enaaknigewin, agiishpin awii shkwiiwin maage awii maajaa-in, zhitoon Niizaanendaagwok Zhichgewin.

Aaniidash? Apii asa maaba egoopjichged gikendang gnimaa awii maajaanid wiijkiwen-in, mjizhiwebziwin miinwaa goopjichgewin adaa bibde. Ndakenjgewin waabmdowemgad apii maajaang miinwaa shkwaa maajaang niizaanendaagwad memdage agwa giishpin kwe aawiyin. Miinwaa agwa woshme mjizhiwebziwin ani zhiwebak, ngoodin agwa aabdeg aga maajaa wewiib.

Weweni naagdiwendan gezhi maajaamba.

Woshme agwa weweni azhiitaa-in, woshme agwa awii anji maajtaa-in, giin miinwaa gdabinoojiimag aga wenpanzim. Dbishkogwanaa, Dbigaaknigewin Inaaknigewin awii waankii-in gdaa doozin jibwaa maajaa-in.



NIIZANENDAAGWOK AGE ZHICHGE-AAN

Niizaanendaagwok Zhichigewin zhibiigan aawan awii gkendman waa zhichge-in miinwaa mookiitaagowin. Awii zhiitaa-in jibwaa mookiitaagowin naabdad maanda.

Aangodinang, gii kendaan waazhi maajaa-in jibwaa mookiitaagooin, agiishpin gkendman ezhiwebak jibwaa mwokseg mjizhewezii-in. Igiweg agaa zhaabshkamwaad mjizhiwebzii-in dbaajmowog ezhi kitchi piitendaagwok awii yaaman naaknigewin aaniish kitchi godagitooyendowin age nkweshkman apii mookiitaagowin. Kwewok miinwaa binoojiinig memdage nizaangaabwiiwog shkwaa bkewidin.

Ninda bangii age mkwendmamba

- Aabish age zhaa-aan? Aaniish gezhi dgoshnaa odi? Aaniish odi minik age yaa-aan?
- Wegnesh aabdeg age maajiidowaan?
- Wegnesh age gnoonag awii naadmowid niin miinwaa gdabinoojiinmag?

Gikinawaadazina-ige:

Wegnesh age maajiidowaan

- Debwewin eyaawiyaan, dbishko gonaa Anoki-Agindaason Mazina-igan, giin miinwaa gdabinoojiinmag Nitaawigiwi-Mazina-iganan, Anishinaabe Eyaawiyin Mazini-igan, Wiisaakode debwewin mazina-igan, Mina-yaawin Masina-igan, gdo bimibizowi-mazina-igan.
- Zhoonyaa, zhoonyaagami mazina-iganens, mazina-igewi mazina-iganens, zhoonyaa-wibii'igan, zhoonyaa-gamig dabaajmowin.
- Mshkiki giin miinwaa gdabinoojiinmag edaabnamwaad.
- Waasamo giigdo biiwaabkoons.
- Ishpendaagwok giigido biiwaabkoons gindaasobiiganan, zhibiigan endaawaad, gwanda gwiichkewenig, maage inoodewizinanag maage naadmaage gamgoon.

Bisonge: Zgagnan bemgii mnik zhoonyaa, miinwaa gakidoon apii awii nikaazyin minaweziyin.

Bisonge: Mazinaakzan ishpendaagwok mziniginan dbishkwo gonaa, dibaaknige inaaaknigewin, ngaasjige naaknigewin, miinwaa zhoonyaagamig mziniginan miinwaa zgaknan epenmandwad endaad, dbishko gonna gwichkewen maage inoowideziwin waajkiwenjged.

Bisonge: Majimendan giigidoo biiwaabkoons gindaaswin dkonwegamgoon miinwaa kwe waankiigamig. Giishpin wewiib nkwedzsiwaad, gegwa niweske, gjitooon gwa awii giigda-in!

Giishpin niizaanendaagwok, wewiib ani maajaan!

**Gegwa memkaaj dowaabmdange ezhi biigaadeg gmzinigan
... ani maajaan!**



WEGNESH AGE GWEJMAG AWII NAADMOWID?

“Gaawii ngi gkendziin kwe waankiigamig agii temgad awii nikaazyaan.”

(agii abi njibaamgad odi *Anishinaabe Kwewog miinwaa inodewiziwin Mjizhiwebziwin*, Geneda, Kichi Kiin Nakii-gamig enji Maawandoonigaadeg miinwaa maado'ookiing owi inodewiziwin mjizhiwebziwin, Ottawa: Bamaadzijig Mina-yaawin Nakiigamig maampii Geneda, 2008).

Agiishpin giin, maage gwaya gekenmad niizanzid, **dkoonweninwok Aganosh**. Adabi shaawog aawii ngaasdowaad maaskaawin miinwaa awii dashiikwaawaad ninda egoopjichgenjin, miinwaa g'dibenimowinan eyaawan.

Gdaa nendam agwa awii gwedwewin naadmaagewin agiishpin dowendzii-in awii maajaa-in.

Agiishpin kwe aawiyin nekweshkman agoopjichgewin, gdaa giigid **kwe waankiigamig**, agiishpin temgag bezhig endnakii-in (niibna agwa iin, daa nookiiwog awii naangowin). Giishpin gegoo tesnag endnakii-in, dkonweninwok, mshkiki kwe maage goopjichigan naadmaagewin enkiitaaged awii zhaa-in memenja besha etag **ajina niizaanendaagwok waankiigamig** maage **aangwaamzii gamig**, apiinish bekaanag shichgewin mkigaadeg.

Maanda ajina niizaanendaagwok waankiigamig maage aangwaamzii gamig (maage kwe waankiigamig maage zhiibashkaa gamig) aawan awii waankii-in miinwaa gdabinoojiimag aawii waankiwaad, zasagona bangiishen giizhigag maage gwa manjigwo mnik aname'e-giishik. Niibna agwa ninda waankiigamgoon niishtana shi niwin dbabagiiswaan yaawog enkiitaagejig, miinwaa daa-aanaa-aan mashkawaade naagdewenjgewin awii zaagdaakwindwaa egoopjichgejig.

Gdaa giigid kwe waankiigamgong maage maazhise giigdwo biiwaabkoonsing awii gwedwewin gegoo maage awii dbaadaman ezhiwebzii-in. Gaawii memkaaj gdaa miigwesiin gdanosiwon. Aaniin agwa ninda kwe waankiigamgoon wenpash giigdoo biiwaabkoons zhibiiganan daa-aa-naa-aan. Niibna agwa zhinda waankiigamgoon enkiitaagejig agii nkwehkaanaa-aa goopjichgewin gewiinwaa miidash aji nsastamwaad ezhiwebzii-in.

Gwanda enkiitaagijig maampi kwe waankiigamigoon aga miingwok miinwaa gdabinoojiinmag awaa dnizyin ewaankiwendaaagwok, miinwaa aga naadmaagwok awii debnaman mijim, agwinan, aanziaanan, damnoonan, gakenjgewin miinwaa aasgaabwitaagewin. Aga naadmaagwok awii debnaman min-yaawin naadmaagewin, zhoonyaa naadmaagewin, onashowewi wiinmaagewin, miinwaa ashki iin waadaa-in, agiishpin maanda diwendiman. Gwanda enkiitaagejig zhinda kwe waankiigamigoon gaawii ada wiindmowaasiwaan agaa goopjichgenjin maage gwa gwayaa bekaanzid, apii yaa-iin, agiishpin goweta bgidnadwaa awii dbaajmowaad.

Gnima gwa gda dowendaan awii ginoongowin maage awii ginoongaazwaad gdabinoojiinmag ani aanji zhiibaashkaa-in. Gdo mina-yaawin miinwaa gdo mna bimaadziwin kichi piitendaagdoon.

- **Naagdewenigewin Anokiiwin** gdaa naadmaagwok awii naagde-endman zhoonyaa, dowaabmdaman awaa daa-in, miinwaa daneman ngoji gwiichkiwen genji nbwaachaapa binoojiin-in enji waankiiwendaagwok (giishpin mna gnoowaabmdaman ezhi dbaaknigaadeg awii zhichgeng.)
- **Kwewok' gakendmowin wiigwaam** gdaa naadmaagwan, memdage gwa Anishinaabe nyaagdewenjgaazjig, maage Anishinaabe anakiitmaagewinan.
- Niibna agwa odenwinan dowaa-aan **mshkiki kwewok miinwaa odenwin mina yaawin naagdewendmajig** age naadmaag miinwaa age naadmowaad gdabinoojiinmag. Niibna agwa dnowaa naadmaagewin temgad, miinwaa gwa gwonda agaa animigowaad wiiyow miinwaa mazhiwe goopjichigewin wiigendmowin, kitchi maanaadendmowin miinwaa inoodewiziwin mjizhiwebziiwin. Aanin agwa ngoji, mshkikiikwe nyaagdewendan nendmowin maage nwendmowin mina-yaawin enkiitan yaawog awii naamaagewaad.
- Aanin odenwinan adowaa-aan **goopjichigan naadmaagewin enkiijig**. Gdaa naadmaagwok miinwaa adaa naadmowaa-aan gdabinoojiinman awii mkameg waankiiwendaagwok awii daa-eg, maage naadmaagowin awii debnamen niizaanendaagwok naagdewenmigowin naaknigewin maage bizaanendmowin dakobinigewin. Goopjichigan naadmaagewin enkiijig gegwa gdaa naadmaagwok awii debnaman wiiyow naandwechigewin maage onashowewin naadmaagewin. Gdaa nsastamoongook gdibenimowinan miinwaa gdaa naadmaag awii dowaabmdaman naadmaadwin. Goopjichigan naadmaagewin enkiijig gdaa wiijiiwigog dkoonwenini gamgoong maage aakozii gamgoong awiizhaa-in. Agaa aasgaabwitaagwok epiichi naagdewendaman awaa zhichge-in. **Anishinaabe dibaaknigewin enkiidmajig** gegoo gdaa zhinoomaagwok naadmaagewinan menezyin.
- Miinwaa gegwa, ensa kiinsin azhinda Geneda temgad awii giigidoowin **maanzhisi giigidoo**, biiwaabkoons wenspash giigdownin. Gaawii memkaaj gdaa wiindmowaasii ezhinikaazyin. Gdaa wiindmaagwok age zhaa-in naadmaagewin awii debnaman. Miinwaa gegoo aga bzindaagwog dbaadaman ezhiwebzii-in, miinwaa enendman. Niibna gwa bemaadzijig nekwedmajig giigdoos biiwaabkoons agii zhiibaashkaanaa-aa gewiinwaa goopjichigewin.
- Onashowewin naadmaagewin temigad **giigdownini dibaaknigegamgoon maage onashowewin aanikowijii-iwewin**, aangodinang gwa gaawii gegoo nangdesno maanda. Gdaa gnoonaa onashowewin aanikoowijii-iwewin, maage onashowewin gamig, Anishinaabe dibaaknigewin enkiidmajig maage goopjichigan naadmaagewin enkiijig awii dakendaman age dinmamba wenspash onashowewin naadmaagewin.

ISHPENDAAGWAD: Giishpin enda-in nji giigda-in zhinda giigdo biiwaabkoons zhibiigan ezhibiigaadeg maampii ekwaa-iin, miinwaa gdo giigdobiiwaabkoons anji mdwesjigewin temgak, gwayaa bekaanzit gnoosh shkwa azhi giigda-in maampii, Giishpin waasamo giigdobiiwaabkoonsin nji giigda-in aasobii-an zhibiiganan agaa azhi giigda-in. Gaawii adash agaa goopji-ig ada gkendziin agaa gnoonad, maage awaa zhichge-in. Niibna egoopjichgejig “nda gkendaanaa-aa” gaa azhi giigdanid newen gwetchtoowaad awii dibenmaad.

AANIISH AGE ZHIWEBAK AGIISHPIN GNOOGWAA DAKOONWENINWOK?

Dakoonweninwok agwa abdeg gdaa bgidnigoog awii giigdawin bkaan ngooji, gaawii odi yaad egoopji-ig. Giishpin kwe awiyin, gdaa gagwedwe awii gnoonad dakoonweniniikwe, gaawiin wiigwa pane maanda zhiseno awii zhiwebak, maage awaa aankootaag gdaa diwenmaa.

- Dkoonweninowok, ntam miinwaa memdage, awii ganawenimig giin miinwaa gda binoojiinmag, miinwaa awii naadmaag awii mna maajaa-in. Giishpin agaa mawinazhgowin maage bkaan baataadwin agii doodmang, adaa dkoonaa awa bemaadzid gaa wiisgaapnanig.
- Dkoonweninwok agwa inaakinigewog awii debnaman mina-yaawin naadmaagewin. Dkoonweninwok agwa daa damaa-aan gaa-gizhi-bideg aakooziwidaabaan awii maajiinig maage gwa wiinwaa awii maajiingowin aakoozii gamgoon, mshkikiikwe gamig maage naandwechge gamgoon.
- Dakoonweninwok gdaa miingoog penmoowin miinwaa aakodewin, miinwaa awii wenaamdaman miinwaa awii debnadwaa naadmaagewin maagwejjig age naadmaagyin. Adaa inaakonigewog awii maajiingowin ngoji giishpin dowendman.

Agiishpin awa bemaadzid agaa kitchi mjizhewebzid dakongaazad, gnimaa agwa adaa gbaakwo gaazwog apiinish dbaaknige gamgoon awii waawiindmaaged zhoonyaa awii zaagjitmowaad gbaakdiigamgoon. Ajina adaa jitaamgad maanda kitchi odenang. Shkwa waawiindmaagewaad zhoonyaa, bgidnigaazwog awii nimaajaawaad, agiishpin dbaaknige gamig makamwaad gegoo genji shkoongaazpaa gbaakdiigamgoon.

Agiishpin zegzii-in awii waankiendaagwozii-in, awiindmo dakoonweninwok jibwaa bgidnind agaa goopji-ig. Debaakniged agwa gnimaa adaa toonan awaa naagdwod jibwaa bgidning. Dbishkogonaa, debaakniged adaa inaaknige maaba agaa mjidoodan gaawii maamdaa awii gnoonig maage awii waabamig. Agiishpin bwaa naagdowaad naaknigewin, adaa dakongaaza miinwaa.

Agiishpin zegzii-in maaba bemaadzid awii wiisgaapine-ig bgidnigaasad, gnimaa gwa gdaa dowaabmdaan enji waankii-endaagwok awii dnizyin, dbishkwo gonaa ajina niizaanendaagwok waankiigamig maage aangwaamzii gamig.

Miinwaa gwa, gdaa gagwedwen “niizaanendaagwok naagdewendaagozi naaknigewin”, maage “mjimnigewin naaknigewin” maage gwa “bizaani’iwewin dabkobinigewin”. Ninda naaknigewinan zhibiigaade maaba bemaadzid agaa mjizhiwebzid begdinind awii zhichiged giin miinwaa gdabinoojiiinmag awiijiiemwin. Dbishkwo gonaa, maanda naaknigewin adaa kidoomagad gaawii maamda awii gnoonig maage awii waabmig ezhi biigaadeg mnik, maage giin miinwaa gdabinoojiiinmag adaa daawog wiigwaaming, miinwaa aabdeg awiin awii nimaajaad.

Giishpin maaba agaa wiisgaapnanig bwaa naagdood naaknigewin, adaa dbagechgaazwok maage adaa o’gbaakoogaazwok.

Giishpin dbaaknigenini maage odoonaakonigens woshme gegwa awii gakendang jibwaa bgidinang naaknigewin, gnimaa giin, miinwaa agaa goopjichiged, awii zhaawaad enji bizindaajigen. Ensa beshigoweg gwa aga bgidnigoo awii wiindmaagewin agaa zhiwebak, gaawii memkaaj gadaa yowaasii giigidonin maampii bizindaajigewining, giishpin goweta dowendaman awii yaawad bezhig, dakoonweninwok ada yaawog zhiwe gdaa wiindmowaag adash zegzii-in wiibwa waankii-in.

Aapaji agwaa znagziwog gwanda agaa goopjichgaazwaad awii gwedwewaad awii naadmaagaazwaad. Ado mnaadenmaa-aan inoodewiziwinwan miinwaa ado penmandwaa-aan ensa giijigag bimaadziwaad. Amiidash wiigwa niisaanendaagwok naagdewendaagowi naaknigewin, mjimnigewin naaknigewin maage bizaani’iwewin dabkobinjigewin gdaa naadmaagnaa-aa giin miinwaa gdabinoojiiinmag.



AANIISH AGE ZHIWEBAK AGIISHPIN DAKOONAAWAAD NINDA MEJIDOODMANJIN?

Dakongaazad gwayaa agaa agoopjichiged adaa ngaashimaa awii aanji mji-doodang, gnigen gwa ajina. Gnimaa maabe egoopjichiged gawii giikendziin endoodang baataadiwin awang. Dakongaazad adaa waabmdoowaa gwand dakoonweninwok naaknigewin naagdiwendaanaa--aa amii dash genji naagdewendmambaa eshchige-in. Bemaadzijig egoopjichiaawaad awiiji bemaadziwan aabdeg awii nsastaanaa--aa mjizhiwebzii aadziwin gaawii **wiikaa** mna daabnigaadesno.

Gbaakoogaazad gwayaa gaawii pane dakongaazsii agiishpin wiigwa dakongaazad, onashowewin naagdowaamzijanan naagjigaaadenoon awii **dibaakonind** maaba bemaadzid agaa agoopji-ig. Maanda enaagjigaadeg bkaan agwa adaa zhinaagwad nowoonj goji maampii kiin, miisiigwaa naasaab ezhi bimibdeg.

Gaawii ago gnimaa gdaa waankiisii, maage awii gniwenmigowin gnesh, aabdeg dash agwa gaa mkwendaan waazhi nanaawitowin giin miinwaa gdabinoojiinmag waazhi waankiiswaad. Woshme agwa nishin giin miinwaa gdabinoojiinmag awii bwaa temgag mjizhiwebzii-in endaa-eg. Temgad naadmaagewin awii gweksidowin gbimaadziwin awii bwaa temgak goopjichigewin miinwaa mjizhiwebzii-in.

Maaba bemaadzid egoopjichiged kidaa agii mamaazhii-ed, maage agii mikigaaza agii mamaazhii-ed, agii mawinanzo-ig maage gdabinoojiinman, dbaaknige gamig adaa ninmaagen inakonigaazowin. Inakonigaazowin gnimaa zhoonyaa dbagewin, kowaabmjigewin, gbaakwiwin maage gwa maamwi ninda adaa miindim. Maaba agaa agoopjichiged gnimaa aabdeg adaa waabman awaa ginoongoojin epiichi kowaamjigaazad.

Ganimaa maabe awii gbaakoogaazad, maage gaawiin gnoowaabmjigaade nowong gegoo, dbishko gonaa agiishpin maanda shkintaam agii baataadwed miinwaa agaa apiichi maji-iiwang agoopjichigewin. Agiishpin zegzii-in gda wiinmowaa gimaa dibaakoniwewinini maage goopjichigewin naadmaagewin enkijig. Dibaakonigewinini adaa toonan naagjigewinan awaa naagzoowaabmjigaadeg apii bgidnigaazad maaba bemaadzid, dbishkoo gonaa awii bwaa gnoonig. Maage, giishpin zegzii-in gbaakoogaazad maabe gwaawii giin miinwaa gdinodewiziwin agaa yaanziinaa--aa mijjim, gegoo pkaan dnowaa pshazhegewin adaa miingaaza, dbishkoo gonaa odenaang nakiid.

Giishpin maaba bemaadzid agaa goopjichiged kidad gawii agii mamaazhi-iisig, aabdeg gwa agazhaa dbaaknigaazad. Gnimaa agwa gdaa bgidnigwo awii miigewin baataangewin, agwi-iin maage ngoji bkaan aajkinganing mzinaateshimigowin, memkaaj wiibwaa waabimad agaa goopji-ig epiichi dbaad-daman agaa zhiwebzii-in. Gnimaa gegoo awaa zongdeweshkaag gdaa wiijaabwitaag, awii waankii-endman miigewin baataadgewin.

Niibna agwa nsa giizis adaa awan jibwaa maajtaamgag dbaaknigewin. Agiishpin dbaaknigewin mkamwaad maaba wiisgaabnewig agii mamaazhii-ed, inaakonigewin ada zhichgaade. Gimaa dibaakoniweweinin gdaa wiindimaag goopjichgewin naamaagewin enkiiijig endnakii-in, miinwaa gdaa wiinmaag ezhibideg dbaaknigewin.

Giishpin maaba bemaadzid agaa goopjichiged mkigaazad agii maazhii-iid maampii dibaakonige gamgong, gnimaa adaa inaaknigaazwog awii naakiiwaad odenang maanda ezhinikaadeg “Oodena Dibaakoniwe Naaknigewin” aangoodnang gwaa azhinkaade “endaad gabaakogaaza”. Dibaaknige nini adaa dgoonaanan nendwendaagwak awii naadmaagowin awii waankii-in miinwaa gdabinoojiiinmag awii waankiiwaad, dbishko gonaa awii bizaanyaad, awii bwaa mnikwed miinwaa awii bwaa nikaazad maji mshkiki, bekaa awii ayaad endaad, miinwaa awii bwaa gnoonig maage awii bwaa waabmig. Gwejim gimaa dibaakoniwewinin miinwaa goopjichgewin naamaagewin enkiiijig ajibwaa maajtaamgag dbaaknigewin age zhichgengba.



AANIISH AGE ZHIWEBZIWAAD GDABINOOJINMAG AGIISHPIN ANIMAAJAA-AAN?

Agiishpin ngadman goopjichgewin zhiwebziwin, gdaa gagwedwe awii gnowendmaadwa gdabinoojiinmag. Gaawii agaa naajtoosiin gnowendmaadwa gdabinoojiinmag, abdeg awii ani maajaa-in njike.

Giishpin nendman gnimaa adaa niizaanziwok gdabinoojiinmag, dkonweninwok gda noonaag awii gwejmadwaa awii wiijiwigoweg giin miinwaa gdabinoojiinmag waankii gamgoon maage ngoji waanji waankii-in. Agiishpin gaawii maamdaa awii maajiindwa gdabinoojiinmag, wiindmoo dakoonweninwok niizaanendaagwok gdabinoojiinmag yaawaad.

Agiishpin dwise-in jibwaa nimaajaa-in, gdaa gnoona ogaagiidomaagewinini age zhichgemba awii ganowendizyin miinwaa awii ganowenmadwaa gdabinoojiinmag. Ogaagiidomaagewinini oada daabii-aan dbaaknige gamgoon misinagan awii gnowenmaadwa gdabinoojiinmag maage agitziim naaknigewin.

Giishpin animendiman gdabinoojiinmag awii waankiwaad, gdo giigdomaagewinini adaa gwejmaan dbaaknigeninooon awii miigwed naaknigewin gwiidgemaagan awii kowaabmjigaazad awii waabmaad binoojiin-in, maage gwa gaawin awii bgidnigaasig awii waabmaad binoojiin-in. Dibaaknigenini onaaknige mkwendaang memaanji nishining binoojiin-ig awii zhiwebag. Gdaa mkwendaan, kichi wewiikaa dibaaknigenini naaknige binoojiin-ig awii bwaa waabmaa-aad gitziimwaan. Giishpin gego bwaa koowaabmjigaadeg gwiidgemaagan awii waabmaad binoojiin-ig, gdaa naaknige gwayaa awii wiijii-ig apii maajiindwaa maage naandwaa binoojiin-ig awii bwaa temgag znagziwin

Gdo waankiiwendaagoziwin miinwaa awii waankiiwendaagoziwaad gda binoojiinmag niigaanendaagwad. Gegwa dniskwe enji niizaanendaagwok zaam gzangendam waazhi naagdiwendmadwaa gda binoojiin mag njike yaa-in. Waankii gamgoon agaa naadmaagoog miinwaa gdabinoojiinmag ajina epiichi dowaabmdaman waa daa-in miinwaa awii naadmaagowin woshme gnesh. Gdo agiigdomaagewinini adaa gwejmaan dbaaknige ninooon awii naaknaad awa egitziinged awii miigwed zhoonyaa naadmaagewin awaa nikaazyin.

Giishpin yaaman mzinigan naagdewendmadwaa gdabinoojiinmag maage gitziim naaknigewin, mzinaakzigan adaa nishin miwidowin gnimaa znagziwin temgak. Mzinaakzigan gegwa gdaa miigwen enjo kinooomaagaazwaad gdabinoojiinmag.

Giishpin znagendman awa bezhig egitziimged maage gwayaa bkaan ada gji maajiinaan binoojiin-ig ngooji pakaan, maage gwa zaagji-iin Geneda, wiindmoo gdo agiigdomaagewinini. Dibaaknigenini adaa naaknige gaawii e-gitziimgejig maamdaa awii maajiinaa-aad binoojiin-ig zaagji-iin endnakiwaad (dbishko gonaa odena, kiinsin, waasewekamig maage Geneda). Dibaaknigenini gego adaa naaknige awii gnowenjgaadeg binoojiin babaami-iyawii-maziniganan dibaaknige gamgoon. Woshme gego awii gkendman age zhichgembaa agiizhpin

znagendman binoojiin-ig awii maajijgaazwaad zaagji-iin Geneda (“miziwekamig binoojiin-in daapnaawaad” azhinkaade) gdaagnoowaabmdaan maanda: <https://travel.gc.ca/assistance/emergency-info/child-abduction-welfare>.

AANIISH AGE ZHIDEBNAMAA AAKWA-ODEWIN MIINWAA MSHKOWENDIMOWIN AWII?

Bezhig kwe agaa zhaabwiid inoodewiziwin majishewebziwin agii maadinmaage debwewin abimaadziwining: “*Woshme agwa gkendaasawin ayaamang, woshme agwa mikawiwini miinwaa shkiawii gegwa age gkendman, miinwaa kina agwa enchii-in woshme gegwa gdaa gkendaana awii mina bimaadzii-ing.*” Agii mashkowendam, gegwa, agii debanang kinomaagewin woshme agii gkendaanaa izhitwaawin miinwaa inaadizwin. Agii naadmaagwan awii mkan mshkowiziwin awii ngadan mjizhewezii maadziwin, miinwaa awii anijaad woshme mina bimaadziwinin. Agii mkwendaanan gitche gitziiman agaa kinoomaagwad, miinwaa agii maajii noondaanan agaa kidnid ninda agaa binjibaad dbaajmowaad awii minwaadizin

Agiishpin gikendaman, maage agii gikendman, agoopjichgewin maage mjizhiweziiwin, makwendan gdo inaadiziwin gmiingoon **basabaagadewin**. Amii maanda gdo mshkowiziwin.

Agiishpin snagzii-in awii wenaamdaman awaa zhichgewin, maage gwiinwinendman, giin agwaa gdaa maajtaa awii maajigtowin zoongidewin miinwaa mshkowiziwin.

Niibna agwa temgad age zhichgamba awii mashkowi zhayaa-in, woshme awii ambendaman miinwaa awii penmandaadzii-in.

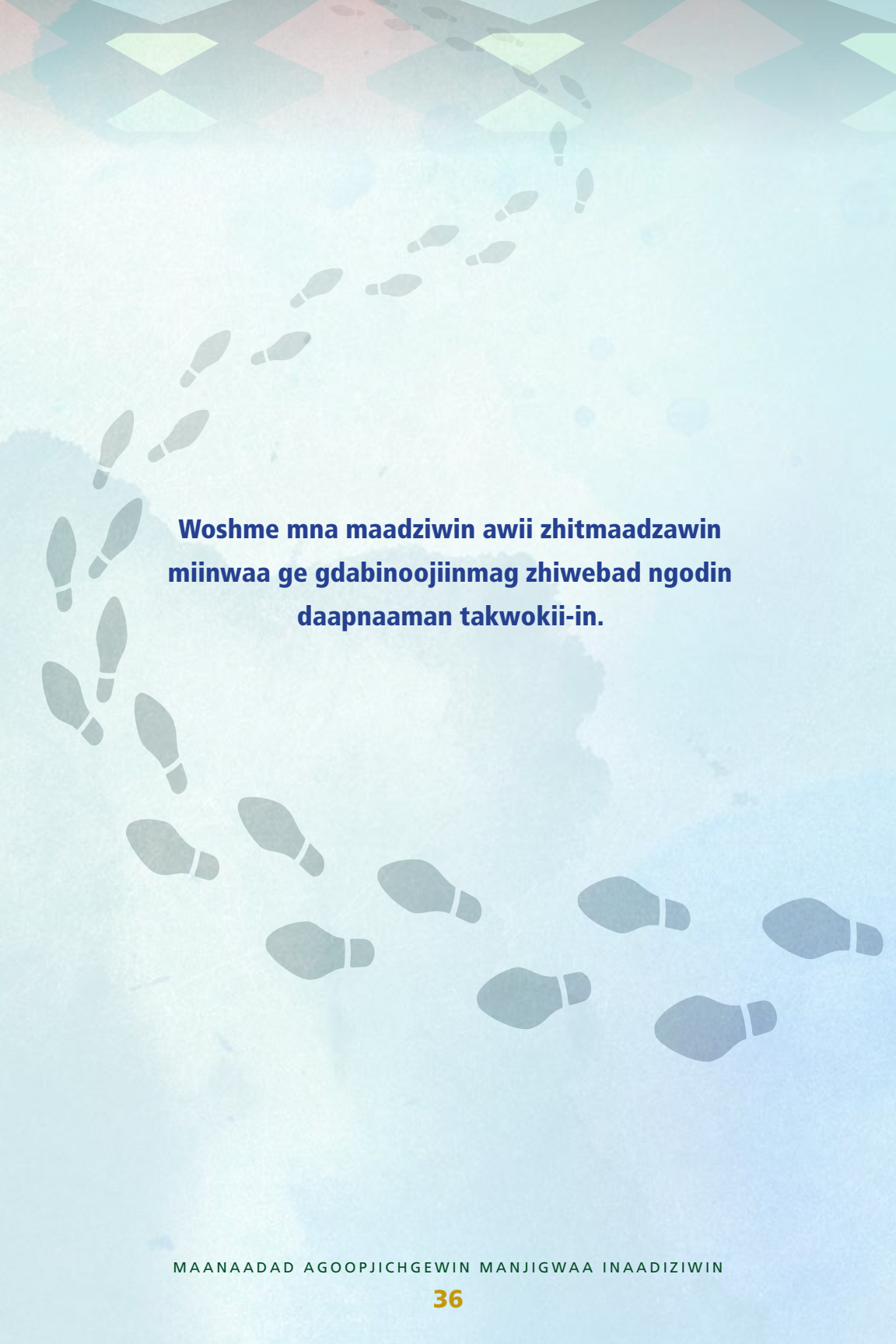
- Gwayaa epenmandwad gdaa gnoonaa ... gaawii gwa memkaaj kina gegoo gdaa wiinmowaasii, awi gweta emina-eyaa-in awii wiindmowad.
- Gegaa agwa kina odenwinan adaanaa-aan mnendaagozi wijiin-ewin, gshkigwaaso wijiin-ewin, “binoojiin miinwaa mamaa-in” wijiin-ewin, AA miinwaa Al Anon wijiin-ewin, netaagijig kinomaagewin, Mina-wijiin-ewin Gamig miinwaa gindaaso gamig. Baazhaa-in maampii miinwaa wijiin-en maamwi nkwehskdaadin gdo bgidendaan miinwaa gde adoo bgidnaan kina snagendmowin, gwiinwinendmowin miinwaa zegendmowin emwoshtowin ... anigiwe-in woshme mashkowizii-in miinwaa mnaadendizawin aga yaan.
- Njike abaa yaawin kiin, maage binoojiin-ig, gwiichkiwenig, inoodewiziniganog baa wijiidwaa aga naadmaagwan. Kina agwayaa ado msendaan zaagji odenana izhaad, zoong'idewin, debwe'endamowin miinwaa bizaanidewin debnaanaa-aa. Mii maanda apii age “gano-waabmdizyin.”

- Niibna bemaadzijig agii mkaanaa–aa manidoowaadziwin, dbishkwo gonaa inaadziwin zagaswe’idiwag, namewin, mina–yaawin gaataadbowinan, miinwaa name gamgong zhaan naadmaagemigad. Ninda dnowaan enakiin naadmaagnaa–aa awii waabmdamwaad weweni ejiwebziwaad, miinwaa weweni wenaamdawaad awaa zhichgewaad.
- Agiishpin nendman gegwa maanjimingonigon, gdaa waabmaa amaanjigonigon naadmaagewinini, agdaa gwedwe etemagag naadmege–winan etemgak.

Agiishpin mkazawan mshkooziwin awii aanjitowin gbi–maadziwin, gniijaansag gdaa mkwenmaag miinwaa bimaadziwinwaa miinwaa aniigaan awiini zhaawaad. Amii maanda bezhig kwe agaa kidad

**“Gda binoojiinmag niigaan dizhi wiikabingwog
Dbishko agwa wiikbidowaad mamaawaan aninjiin
Aaniish naa, wiigbidonaa-aa gegwa gdinendmowin-naa.
Amii-dash niigaan kina aji zhaa-in.”**





**Woshme mna maadziwin awii zhitmaadzawin
miinwaa ge gdabinoojinmag zhiwebad ngodin
daapnaaman takwokii-in.**

AKIDWINAN ENKAAZAN MAAMPII MZINIGAANSIN

Gaawii ndikdasiimi: Aanwi agwaa nindan nisidotamonwinan gdaa naadmaagwan awii nsastaman gaawii aawizinon onashowewinan. Ensa giizhag enkaazan. Giishpin woshme awii gkendman edman gego ezhiwezii-in, giigidonini maage onashowewin aanikoowijji-iwewin gdaa gnoonaa.

mawinanzo

Mawinanzo zhiwebad giishpin gwayaa nikaazed mashkowiziiwin, maage waawiindmaage mashkowiziiwin, gwayaa bekaanzinjin nendzig gego awii zhiwebag. Nwendmowin miigwen agii mashkowiziikaagowin maage zegzii-in gaawii aawizinoon nendmowin.

shkaa tkoongowin noondmowing

Maanda aawan dibaaknigewin etemgak shkwaa daapnigaazad miinwaa dokonind. Wenaabmdaan endgwen agaa tkoonind ajii bigidnind nikaazan naaknigewinan, dbishkwo gonaa waabwa abi gnoonig. Maage, dbaaknigenini adaa wenaabmdan endgwen aji gbaakogaazad biinish agaa naaknigaazad dzhiikaadeg dbaaknige gamgoon. Shkwaa dakoongowin noondmowing age gwaa zhinkaade “eke bgidnind dbaaknidin”.

dbaaknige gamig naaknigewin

Giishpin zegzii-in aawii bwa waankii-in, gaawii adash gdandwendziin awii gnondwaa tkonweninnwok awii naadmogowin, gnimaa gdaa debnaan naaknigewin inoodewiziwin dbaaknige gamgoon, kidoomgag maaba agaa goopjichiged aabdeg wiibwaa zhaad ngoji yaa-in; *mjiminawe naaknigewin* niiba nching zhinkaadenoon ninda. Gdaa gwedwe onashowewin naadmaagewin awii ndakendman dnowaa inodewizinan dbaaknigegamgoon etegin endnaakii-in. Niizaanendaagwag Naagdiwenmigowain Naaknigewin maage *niizaanendaagwag nanagewin naaknigewinan* aawinoon awii naagdewenjgaazwaad maampii kiin maampii inoodewiziwin mjizhiweziiwin Naaknigewinan. Gnimaa agwa adaa miinaa-aan agaa goopjichgaaznig njike abiitaagewin (giin miinwaa gdabinoojiinmag, gaawii maabe agaa goopjichged) aawii yaawaad endawaad; awii zaagjichgaazad zhinda wiiwaamin agaa goopjiwed; miinwaa awii chigaadeg aajichganang awii waabmaad miinwaa awii gnoonaad agaa goopjichgaaznid miinwaa agwaa aanin naachigewinan. Gdaa gwedwen onashowewin naamaagewin awii gwedwewin dnowaa eteg inoodewiziwinan naaknigewinan eteg endnakii-in miinwaa endgwe ninda aji miiksemgag zhinda ezhiwebzii-in.

omamaazhii mwoshkaajjikewin

Agishpin zegzii-in zaaam gwayaa aabji noopnanig maage abi gnoonig downemaaswad, maage koowaabmig maage godaazomiwewin zhayaataag, maage gdabinoojiinmag maage gdinoozewinag, awa bebmaadzid mamaazhii'e zhichige maand ejinkaadeg *omamaazhii mwoshkaajjikewin*. Naangoodnan zhinkaade inashikowe.

Gimaa Dibaakoniwewinini

Amii maaba giigdoo nina (aangoodnan zhinkaaza *Gimaa Ogagiigidoomaagenini maage Gimaa Dbaaknige Nini*) enaabshkowaad gimaa-in (ezhkenjgaaza Gimaa) giin awii naabshkaag. Gimaa Dibaakoniwewinini dbaad-daan gaa zhiwebag awii noonmowaad dbaaknige Gamig mji-ii agii doodmang, gnimaa age gwa gaa goopjichgaazad, maage gaa waabmdang agaa zhiwebak awii dbaajmowaad agaa zhiwebak, dbaknigenini awii noodan. Awa bezhig bemaadzid agaa tkoon-ind gewii dowaan giigdninwon, Nanaakonagewinini Ezhinkaazad.

binoojiin naagdewendaagozid (gitziiman naagdewenmigwaad naaknigewin)

Giishpin giin naagdewendmadwaa gdabinoojiinmag, giin gdandendaagoos awii zhitoo-in wazhi naagdewendmadwaa binoojiin-ig bimaadziwinwaa (dbishkwo gonaa ezhi koognigaazwaa miinwaa kinomaagewin). Yaaman maanda naagdewenjgewin, gdabinoojiinmag gwiijgendaagwok, adaa nbwaachaa-aan newen odi bezhig gitziimwaan. Binoojiin naagdewendaagozid adaa-awan njike naagdewenjgewin, bezhig egitziinged adishtoonan waazhi giniwenjgaazwaa binoojiinig, maage wiiji naagdewendmaawaad binoojiin-ig, neniish egitziingejig adishtonaa-aa wazhi gniwenjgaazwaa binoojiin-ig. Gitziiman naagdewenmigwaad naaknigewin gegwa adaa nikaaznaa-aanin kiin. Gitziiman naagdewenmigwaad naaknigewin zhibiigaade gezhi niizhyeg enendmeg awii zhiwebziwaa binoojiinig, miinwaa memeshkwao gezhi gne-enjgaazwaa.

bizaani'iwewin dakobinigoon

Giishpin ziegzii-in awii goopjigowin, gnimaa gdaa debnaan bizaani-iwewin dakobinigan, gegwa ezhinikaadeg "nsidwendmowin". Dbaknige gamgoon naaknigewin ezhibiigaadeg aabdeg awaa zhichged maabe agaa goopjichged. Dbishkoogonaa, maabe bemaadzid gnimaa adaa ngaasjigaaza awii waabmig, awii maajiibiimaag, maage awii gnoonig. Agiishpin naagdoosig maada naaknigewin, dkoonweningoon gnimaa adaa maamgingoon. Giishpin woshme gego awii gkendman maanda bizaani'iwewin dabobinigoon, dkoonenini maage giigdonin gdaa gwejmaa.

kowaabmjigaazwin

Dbaaknige naaknigewin aawin waajiiemgag inakonigaazod agaa mamaazhii-ed. Maaba owaabmjigaazad tanoon awaa naagdood bgidnigaazad, dbishkoo gonaa aabdek awii daapnang gnondinwin.

naaknigewin

Shkwaa mkigaazad gwayaa agii mamaazhii-ed, naakina maaba bemaadzid awii gbaakwind, odaapinaa naaknigewin zhinkaade, maage awii bimitaad odenaang, *odenaang bimitaage naaknigewin*. Naangoodnang gwayaa bimitaad agaa naaknind, naagjiginan chigaadenon awaa naag-dood, dbishkoo gonaa, gaawii maamda awii ngadang enndaad, giishpin ete gwo zhibiigaadeg awii zaagjiitang, angwadnang shinkaade "Endaa'in gabaakwogowin). Maage adaa naaknigaaza awii nakiid odenaang, dbishkwo gonaa naadmowaad getch piitzinjin.

