



# Seasonal Outlook

*Gulf of St Lawrence,  
East Newfoundland Waters  
and Labrador Coast*

*Winter 2022-2023*

Issued by the Canadian Ice Service  
Environment and Climate Change Canada  
December 01/2022



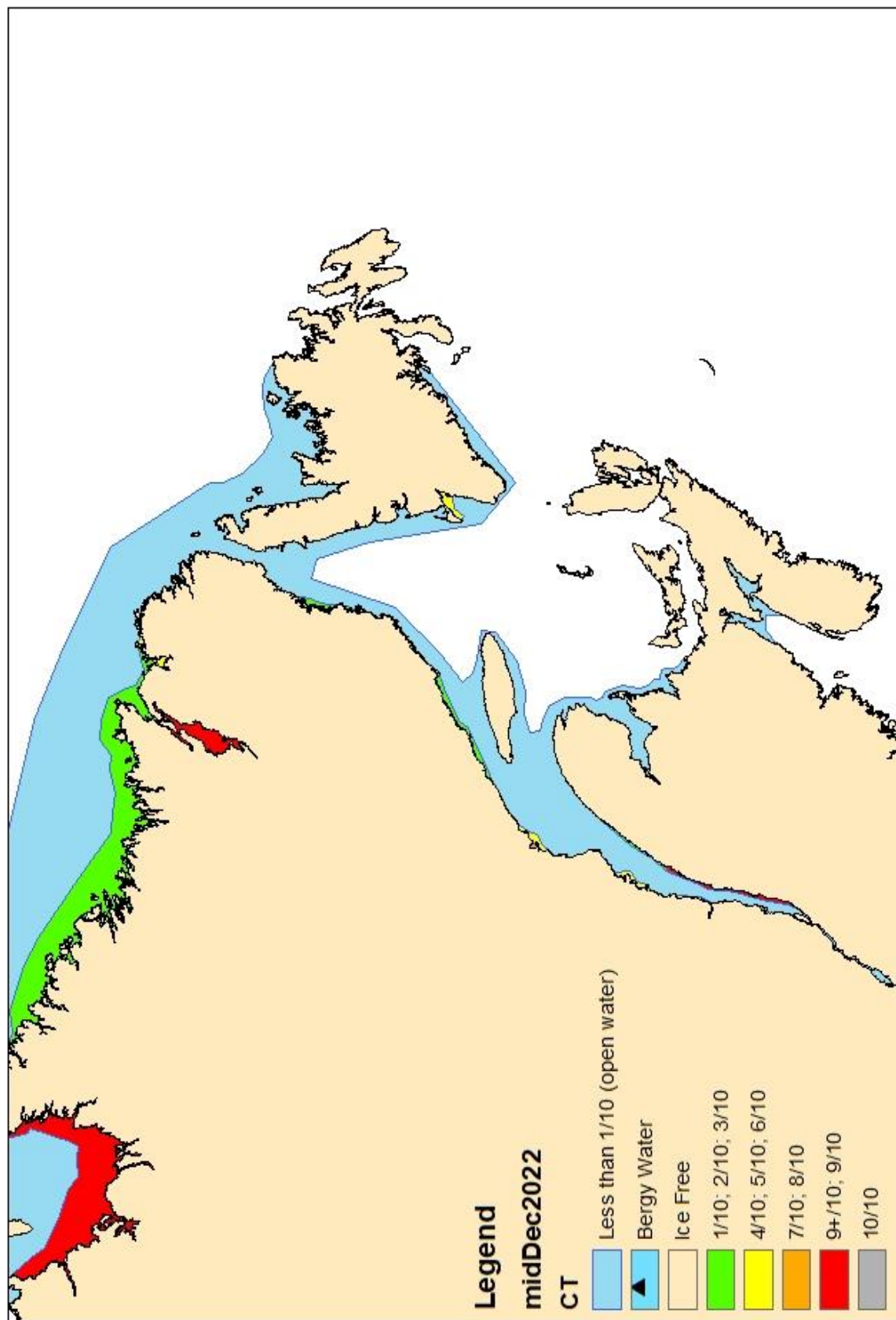


Figure 1: Expected ice conditions – mid-December 2022

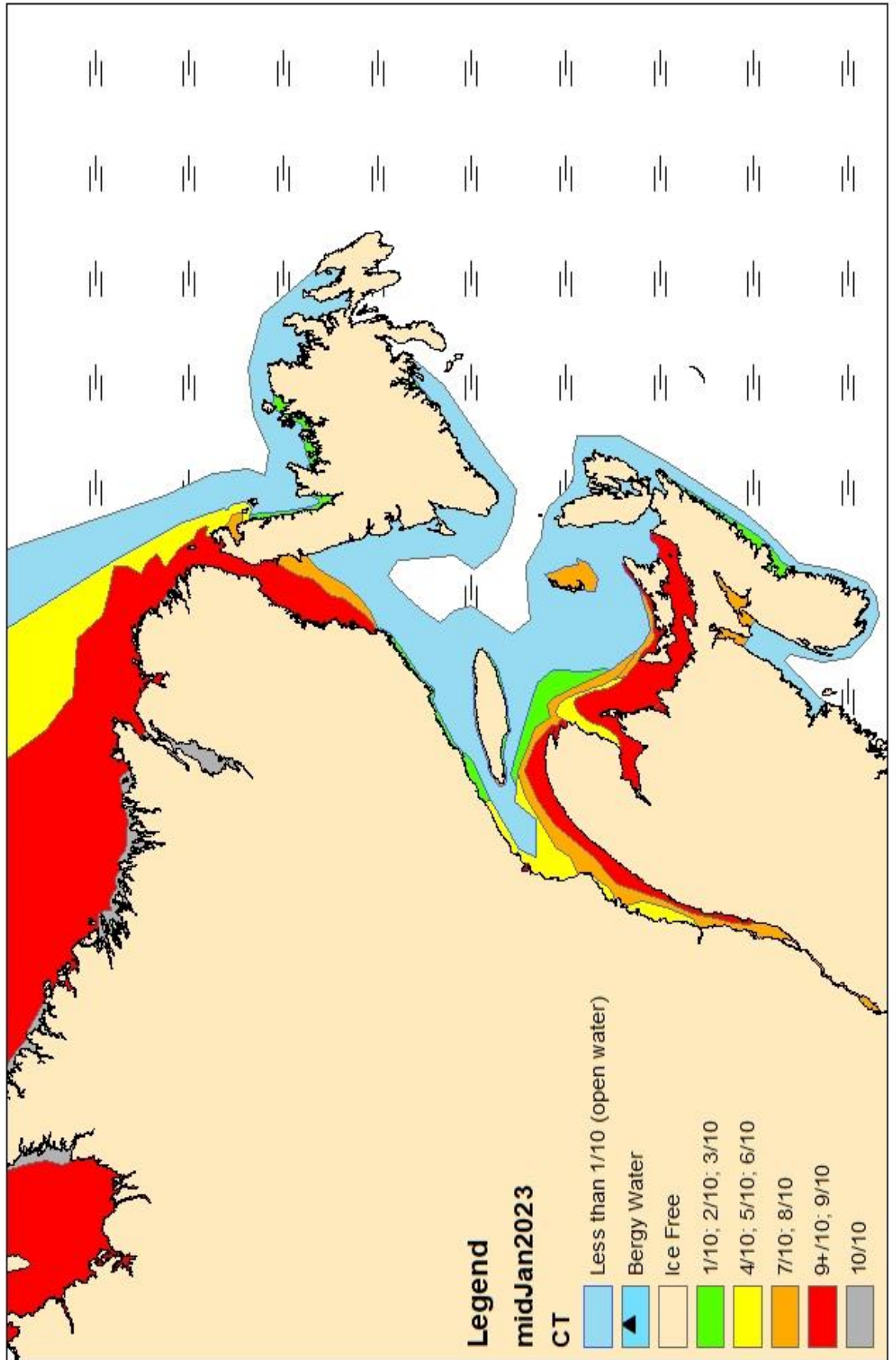


Figure 2: Expected ice conditions – mid-January 2023

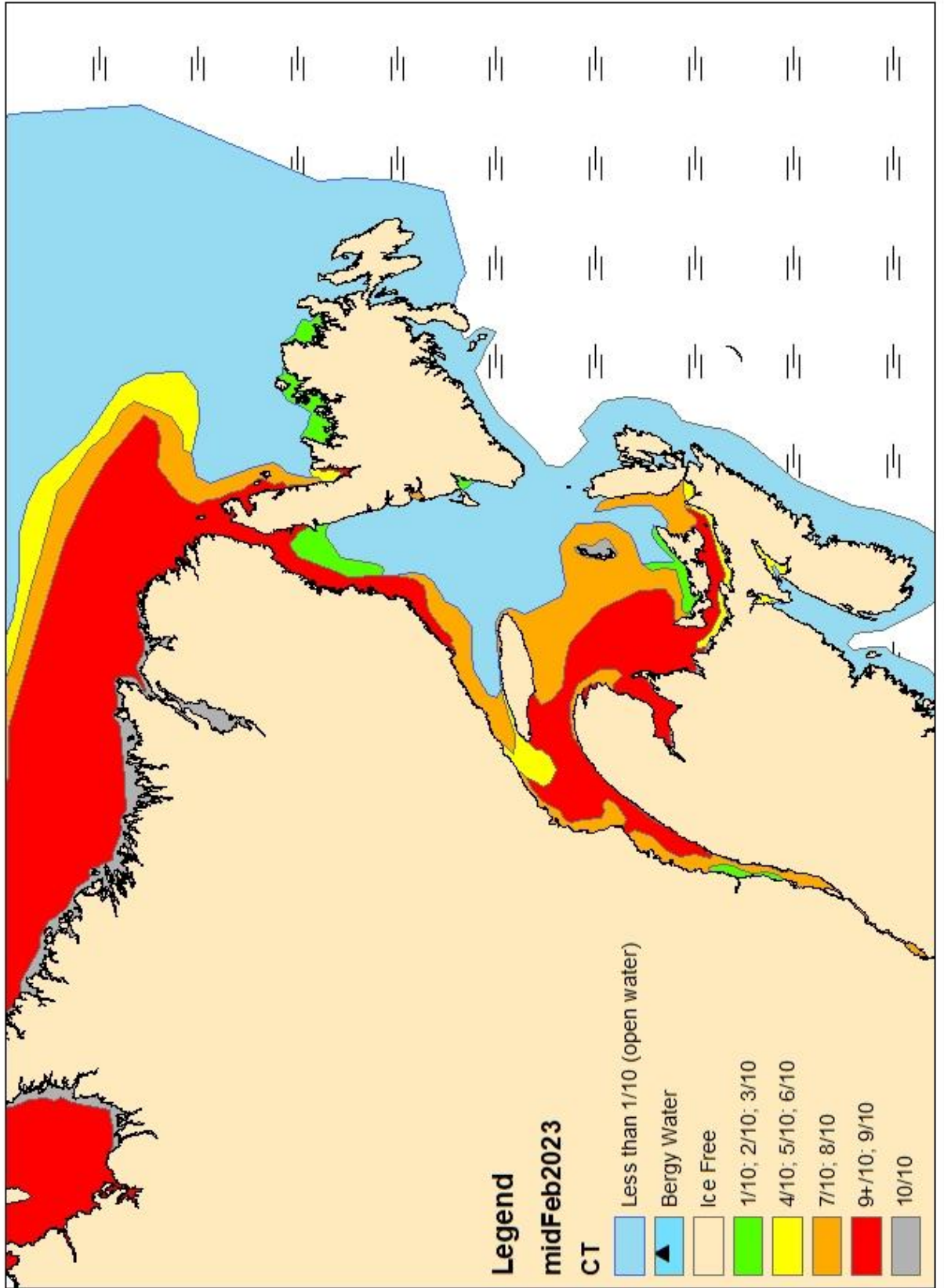


Figure 3: Expected ice conditions – mid-February 2023

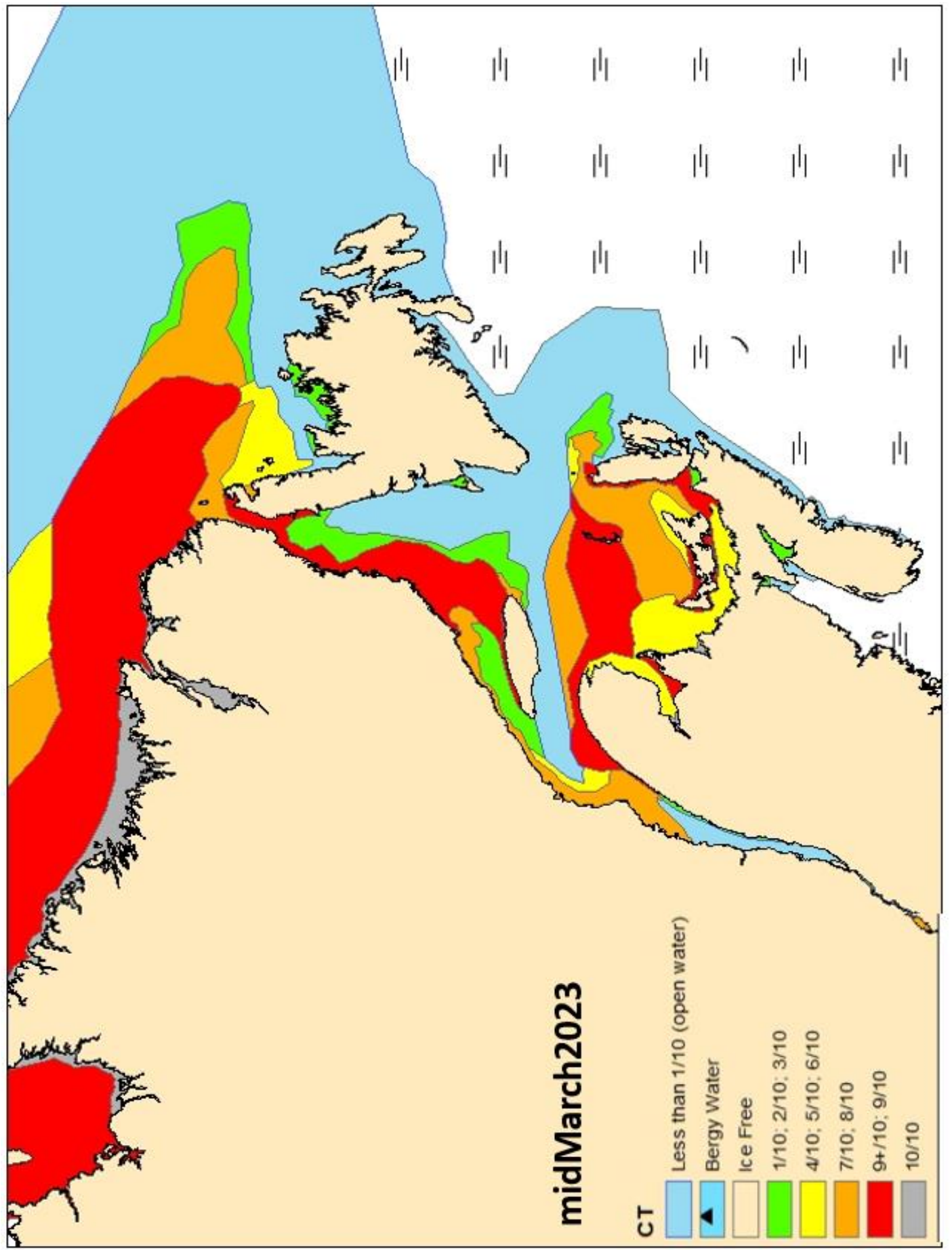


Figure 4: Expected ice conditions – mid-March 2023

## **Gulf of St-Lawrence**

### **Winter temperature and ice forecasts**

The surface air temperature is expected to be above normal for the December-February period for the Gulf. Ice conditions are expected to be below normal.

### **The Estuary.**

Outlook for December...

December 1-15: Open water except 1-3 tenths new ice along parts of the shore in the western section and near Sept Iles.

December 16-25: Open water except 4-6 tenths new and grey ice along parts of the coast.

December 26-31: Open water except 7-8 tenths new and grey ice along parts of the coast

Outlook for January...

January 1-7: Open water except 7-8 tenths new and grey ice along parts of the coast.

January 8-20: 4-6 tenths new and grey ice except 7-8 tenths grey ice in the western section and along parts of the shore.

January 21-31: 4-6 tenths new and grey ice except 7-8 tenths grey and grey-white ice in the south-western section. 9-9+ tenths grey and grey-white ice along the southern shore.

Outlook for February...

February 1-10: 7-8 tenths grey and grey-white ice except 9-9+ tenths grey and grey-white ice along the southern shore and near Sept Iles.

February 11-22: 9-9+ tenths grey and grey-white ice.

February 23-28: 4-6 tenths grey ice except 7-8 tenths grey and grey-white ice in the eastern section and along the southern shore.

### **Chaleur Bay southward to Northumberland Strait.**

Outlook for December...

December 1-12: Open water.

December 13-20: Open water except occasion patches of 1-3 tenths new ice in southern Chaleur Bay and in Miramichi Bay.

December 21-31: Open water except 7-8 tenths new and grey ice southern Chaleur Bay and in Miramichi Bay.

Outlook for January...

January 1-10: Open water except 7-8 tenths new and grey ice along the coast.

Consolidated grey and grey-white ice in sheltered bays.

January 11-20: 7-8 tenths new and grey ice except 9-9+ tenths new and grey ice near the coasts. Consolidated grey-white ice in sheltered bays and inlets.

January 21-31: 9-9+ tenths new and grey ice except 9-9+ tenths grey and grey-white ice in Chaleur Bay and Northumberland Strait. Consolidated first-year ice in sheltered bays and inlets.

Outlook for February...

February 1-28: 9-9+ tenths grey and grey-white ice except 9-9+ tenths grey-white and first-year ice along parts of the shore in Chaleur Bay and in the Northumberland Strait.

Consolidated first-year ice in sheltered bays and inlets.

### **West coast of Newfoundland.**

Outlook for December...

December 1-31: Open water.

Outlook for January...

January 1-10: Open water.

January 11-20: Open water except 1-3 tenths grey ice in sheltered bays and inlets.

January 21-31: Open water except 4-6 tenths grey ice along parts of the coast.

Consolidated grey ice in sheltered bays and inlets.

Outlook for February...

February 1-28: Open water except 4-6 tenths grey ice along parts of the coast.

Consolidated grey-white ice in sheltered bays and inlets.

**North Shore of Quebec.**

## Outlook for December...

December 1-10: Open water.

December 11-20: Open water except 1-3 tenths new ice along parts of the coast east of Chevery.

December 21-31: Open water except 4-6 tenths new and grey ice along parts of the coast east of Chevery. Consolidated grey ice in sheltered bays and inlets.

## Outlook for January...

January 1-20: Open water except 4-6 tenths new and grey ice along the coast. 7-8 tenths new and grey ice near the coast east of Baie-des-Ha! Ha!. Consolidated grey-white ice in sheltered bays and inlets.

January 21-31: 7-8 tenths new ice except 9-9+ tenths grey ice along near the Strait of Belle Isle. Consolidated grey-white ice in sheltered bays and inlets.

## Outlook for February...

February 1-28: 9-9+ tenths new and grey ice except 9-9+ tenths grey ice along the coast.

9-9+ tenths grey and grey-white ice near the Strait of Belle Isle. Consolidated grey-white ice in sheltered bays and inlets.

**Elsewhere.**

## Outlook for December...

December 1-31: Ice free to open water.

## Outlook for January...

January 1-10: Ice free to open water except isolated areas of 1-3 tenths new and grey ice near the Îles de la Madeleine and in sheltered bays along the north shore of Prince Edward Island.

January 11-20: Ice free to open water except isolated areas of 4-6 tenths new and grey ice along the coast of Anticosti Island, the Îles de la Madeleine and the north coast of Prince Edward Island.

January 21-31: Open water except 9-9+ tenths new and grey ice near the Îles de la Madeleine and along sections of Anticosti Island. 9-9+ tenths new and grey ice near the north coast of Prince Edward Island.

## Outlook for February...

February 1-14: Open water except 9-9+ tenths grey and grey-white ice southwest of line from Gaspé to Cape Breton Island. 9-9+ tenths new and grey ice around Anticosti Island.

February 15-28: 1-3 tenths grey ice except 9-9+ tenths grey-white ice southwest of line from Gaspé to Cape Breton Island. 9-9+ tenths grey ice around Anticosti Island. 9-9+ tenths first-year ice along parts of the Îles de la Madeleine and Cape Breton Island coasts.

## **East Newfoundland Waters and Labrador Coast.**

### **Winter temperature and ice forecasts.**

Average air temperatures are expected to be above normal for December to February over the East Newfoundland Waters. Near to above normal temperatures are forecast along the Labrador coast. Near to below normal ice conditions are forecast.

### **Labrador Coast and Strait of Belle Isle.**

Outlook for December...

December 1-13: Bergy water except 1-3 tenths new and grey ice along parts of the coast near Cartwright and northward.

December 13-23: Bergy water except 7-8 tenths new and grey ice along the coast north of Georges Cove.

December 24-31: Bergy water except 7-8 tenths new and grey ice near the coast from the Strait of Belle Isle northward.

Outlook for January...

January 1-20 4-6 tenths new ice except 7-8 grey ice along the Labrador coast from the Strait of Belle Isle to Black Tickle. 9-9+ tenths grey and grey-white ice along the Labrador coast north of Black Tickle. Consolidated first-year ice in Sandwich Bay.

January 21-31: 9-9+ tenths grey ice except 9-9+ tenths grey and grey-white ice extending 30 nautical miles from the Labrador coast. Consolidated first-year ice in Sandwich Bay and protected inlets along the Labrador coast.

Outlook for February...

February 1-28: 9-9+ tenths grey and grey-white ice except 9-9+ tenths grey-white and first-year ice extending 30 nautical miles from the Labrador coast. Consolidated first-year ice in Sandwich Bay and protected inlets along the Labrador coast and along parts of the coast in the Strait of Belle Isle.

### **Lake Melville.**

Outlook for December...

December 1-11: 7-8 tenths new and grey ice except 9-9+ tenths grey ice along parts of the coast.

December 12-26: 9-9+ tenths grey and grey white ice. Consolidated grey-white ice along parts of the coast.

December 27-31: Consolidated grey-white ice.

Outlook for January...

January 1-10: Consolidated grey-white and first-year ice.

January 11-31: Consolidated first-year ice.

Outlook for February:

February 1-28: Consolidated first-year ice.

### **Newfoundland.**

Outlook for December...

December 1-24: Ice free except open water near the Northern Peninsula.

December 25-31: Open water except occasional patches of 1-3 tenths new and grey ice in isolated bays and inlets along the northern coast.

Outlook for January...

January 1-10: Open water except occasional patches of 1-3 tenths new and grey ice along parts of the northern coast.

January 11-20: Open water except 4-6 tenths new and grey ice in Hare Bay and east of the northern part of the Northern Peninsula. 1-3 tenths new and grey ice in sheltered bays along parts of the northern coast.

January 21-31: Open water except 7-8 tenths grey and grey-white ice northeast of the Northern Peninsula. 4-6 tenths new and grey ice in Hare Bay and along parts of the northern coast.

Outlook for February...

February 1-15: Open water except 9-9+ tenths grey and grey-white ice east of the Great Northern Peninsula. 7-8 tenths grey ice along the north shore.

February 16-28: Open water except 9-9+ tenths grey-white and first-year ice east of the Great Northern Peninsula. 7-8 tenths grey ice along the north shore.